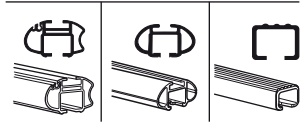
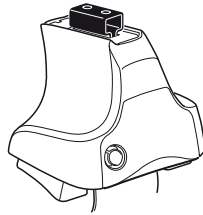


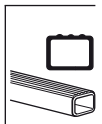
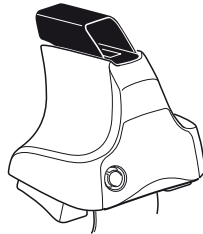
# Kit 1440

TOYOTA Auris, 5-dr Hatchback, 06–  
TOYOTA Corolla, 5-dr Hatchback, 06– (Australia)

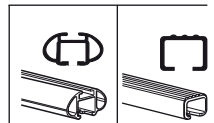
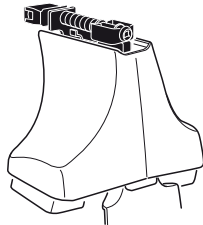
480R  
754



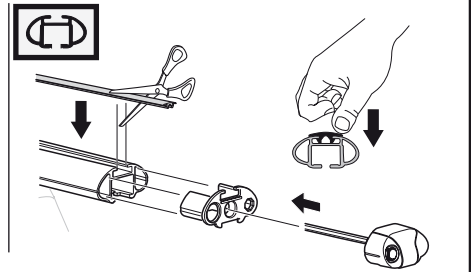
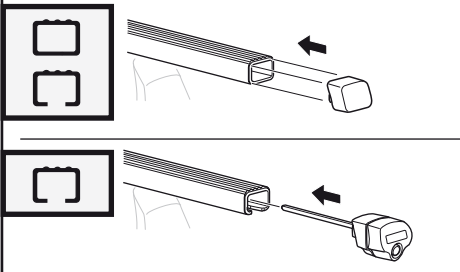
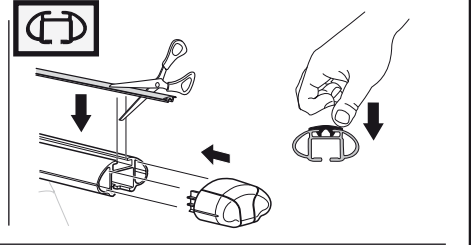
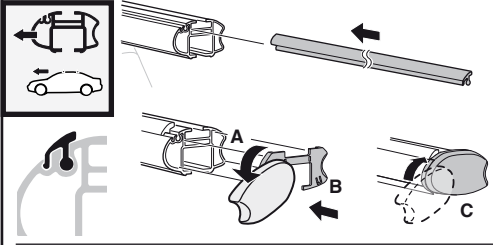
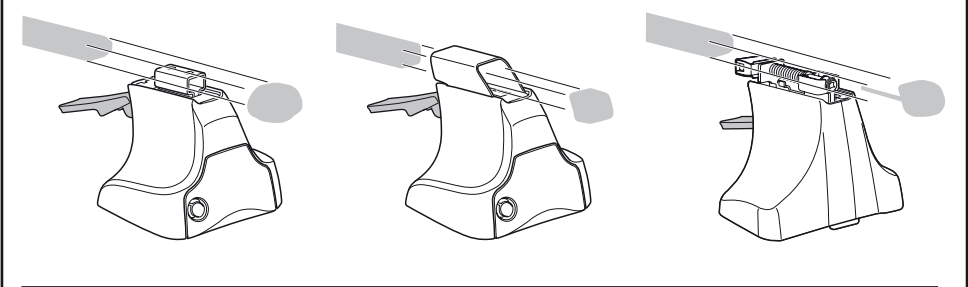
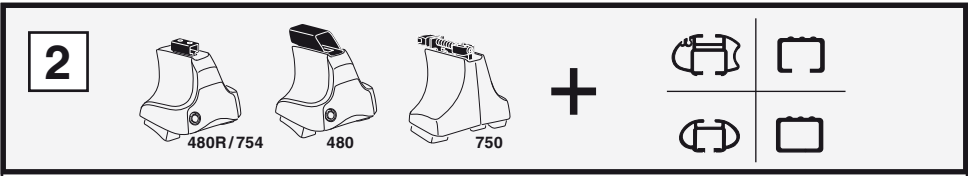
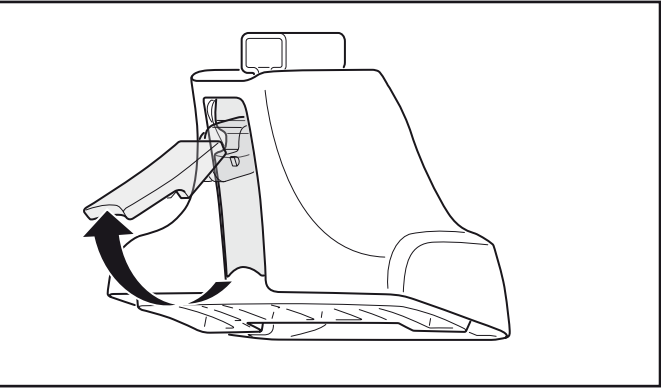
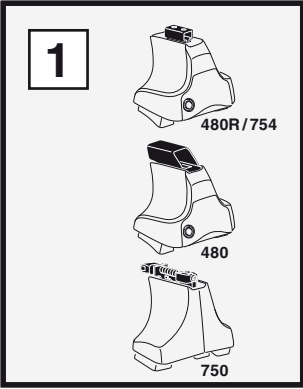
480

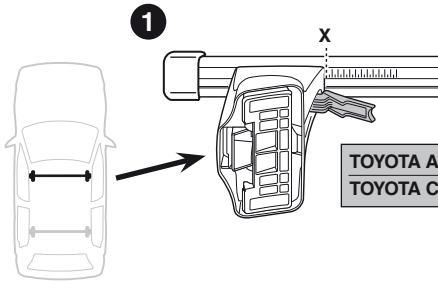


750

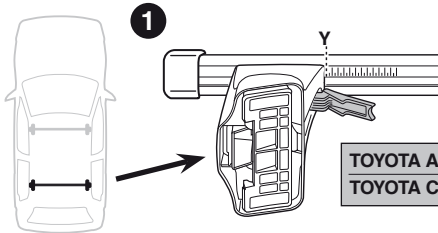


**Kit**

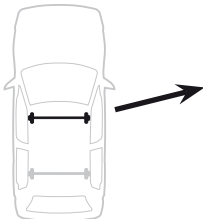




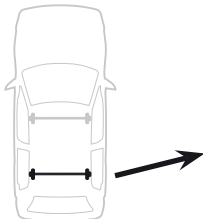
	X
<b>TOYOTA Auris, 5-dr Hatchback, 06-</b>	<b>36,5</b>
<b>TOYOTA Corolla, 5-dr Hatchback, 06- (Australia)</b>	<b>36,5</b>



	Y
<b>TOYOTA Auris, 5-dr Hatchback, 06-</b>	<b>34</b>
<b>TOYOTA Corolla, 5-dr Hatchback, 06- (Australia)</b>	<b>34</b>



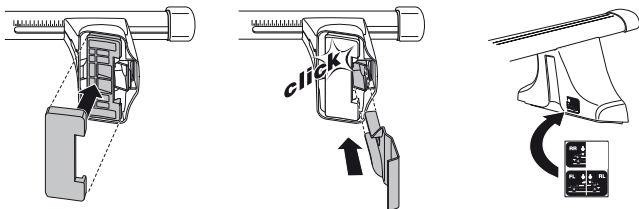
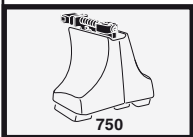
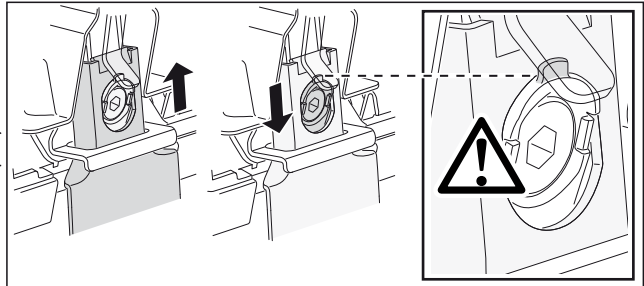
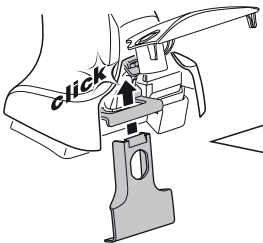
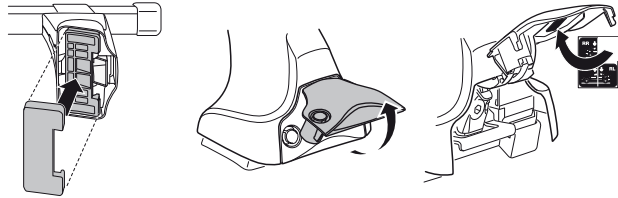
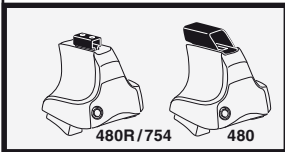
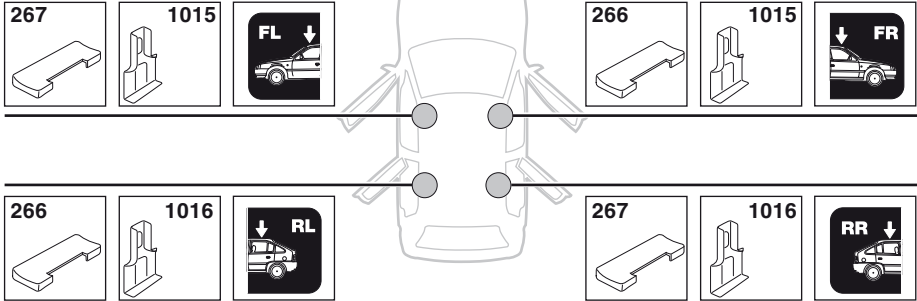
	X inch	X mm
<b>TOYOTA Auris, 5-dr Hatchback, 06-</b>	<b>40"</b>	<b>1016 mm</b>
<b>TOYOTA Corolla, 5-dr Hatchback, 06- (Australia)</b>	<b>40"</b>	<b>1016 mm</b>



	Y inch	Y mm
<b>TOYOTA Auris, 5-dr Hatchback, 06-</b>	<b>39"</b>	<b>991 mm</b>
<b>TOYOTA Corolla, 5-dr Hatchback, 06- (Australia)</b>	<b>39"</b>	<b>991 mm</b>

# 4

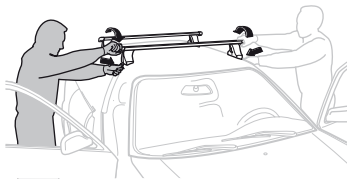
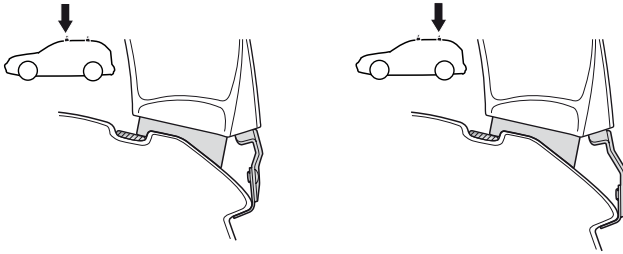
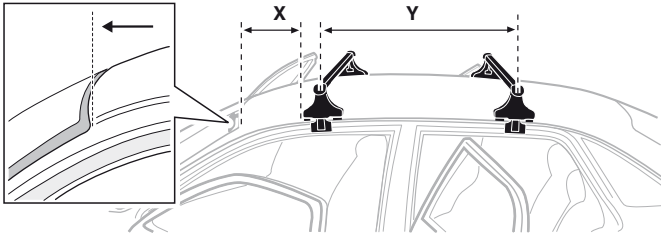
TOYOTA Auris, 5-dr Hatchback, 06–  
 TOYOTA Corolla, 5-dr Hatchback, 06– (Australia)



5



	X mm	Y mm	X inch	Y inch
TOYOTA Auris, 5-dr Hatchback, 06-	320 mm	710 mm	12 <sup>5</sup> / <sub>8</sub> "	28 "
TOYOTA Corolla, 5-dr Hatchback, 06- (Australia)	320 mm	710 mm	12 <sup>5</sup> / <sub>8</sub> "	28 "



**GB/US** Tighten alternately

**D** Die Schrauben abwechselnd anziehen

**F** Serrer alternativement chaque côté

**NL** Afwisselend aan de linker- en de rechterkant aandraaien

**I** Alternare il serraggio delle viti

**E** Apretar alternativamente

**PT** Aperte alternadamente

**S** Dra åt växelvis

**FIN** Kierrä vuorotellen

**EST** Pinguldage vaheldumisi

**LAT** Pielvelciet pamišus

**LIT** Užsukinėkite pakaitomis

**PL** Śruby dokręcaj naprzemiennie

**RU** Затягивайте попеременно

**CZ** Pokręťta bagažníka dokręcaj dokręcaj naprzemiennie.

**SK** Doťahujte striedavo

**SLO** Privijajte izmenično.

**HR** Naizmjenično zategnite

**HU** Egymástól függetlenül szorítandó

**GR** Σφιγγετε εναλλάξ

**TR** Dönüşümlü sıkın

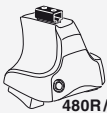
**中文** 交替拧紧

**한국어** 번갈아 가며 조이십시오.

**日本語** 交互に締め付けてください。

**ไทย** ชันในแบบสลับ

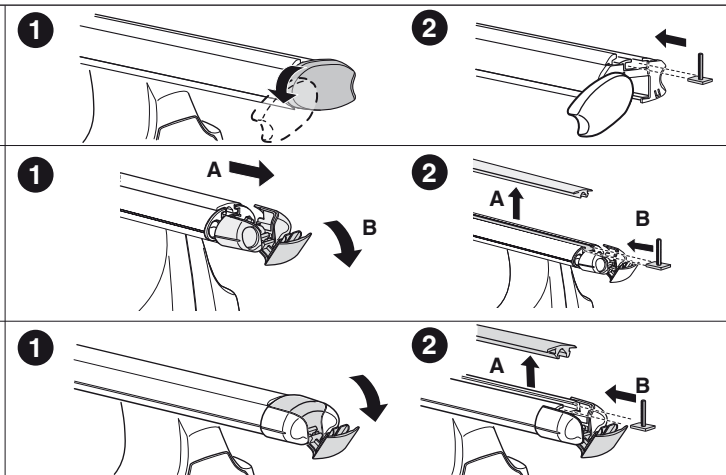
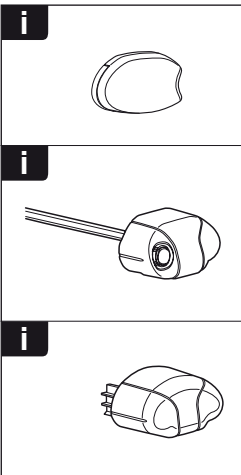
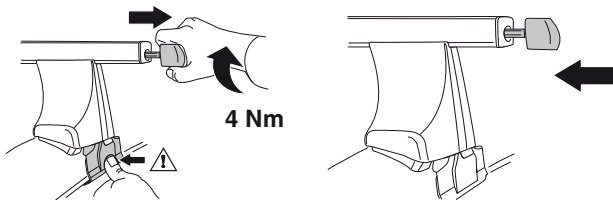
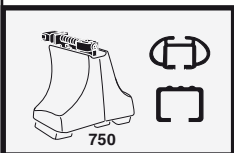
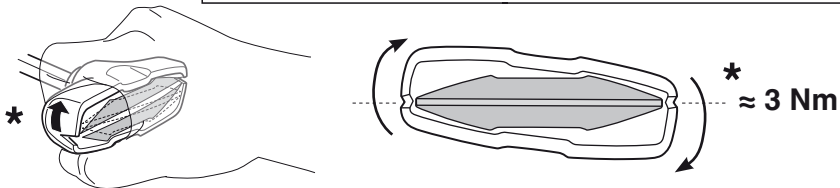
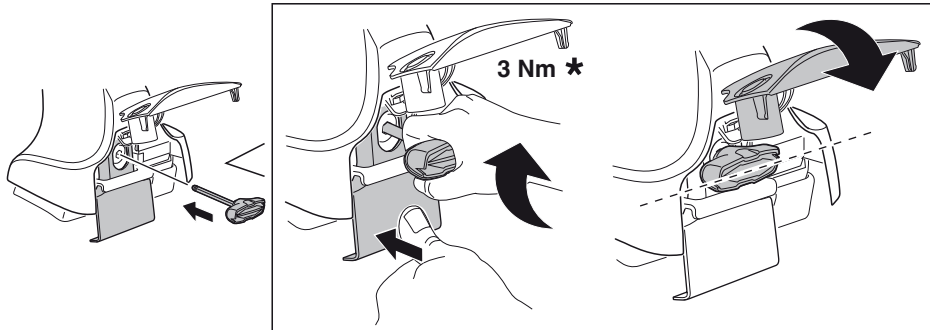
6



480R/754



480





**THULE**  
SWEDEN  
**ONE  
KEY  
SYSTEM**



- 544 (x4)
- 596 (x6)
- 588 (x8)
- NA 510 (x10)
- EUR 452 (x12)
- ASIA



WW ▶ Thule Sweden AB, Box 69, 330 33 Hillerstorp, SWEDEN  
NA ▶ Thule Inc., 42 Silvermine Road, Seymour, Connecticut 06483, USA

info@thule.com  
customer.service@thule.com

www.thule.com