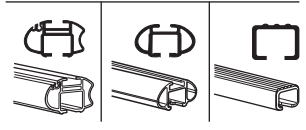
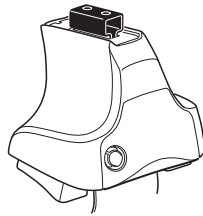


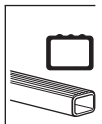
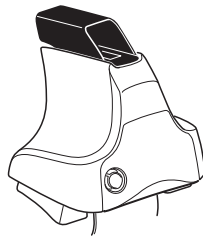
Kit 1521

FORD F-150, 4-dr Super Cab, 09–
FORD F-150, 4-dr Super Crew Cab, 09–

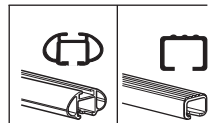
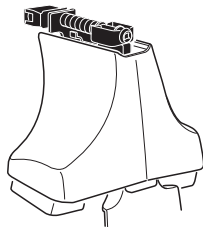
480R
754



480



750



x1

x4

x4

x4

480R/754

x1

x4

x4

x4

480

x1

x4

x4

750

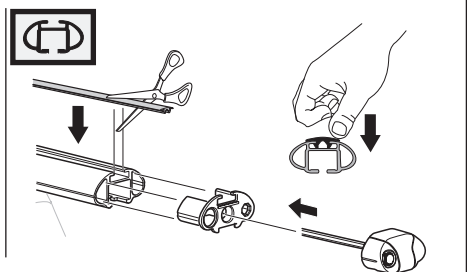
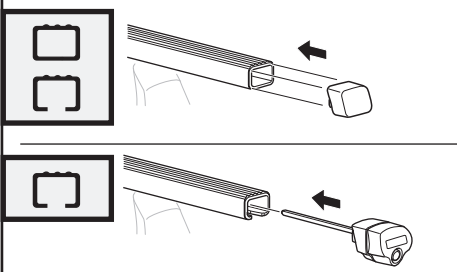
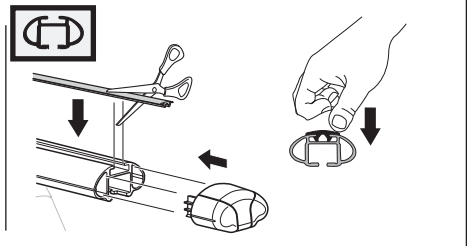
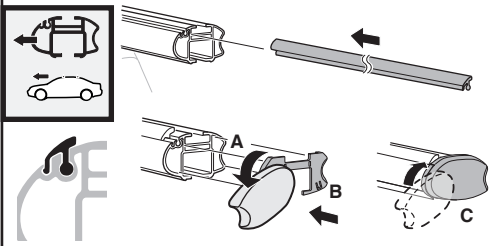
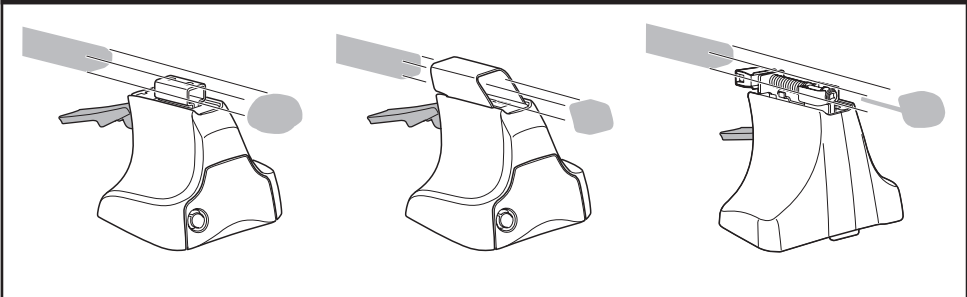
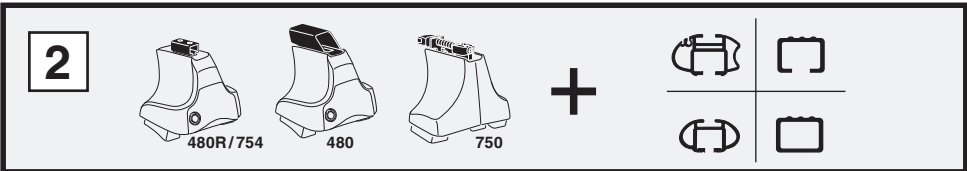
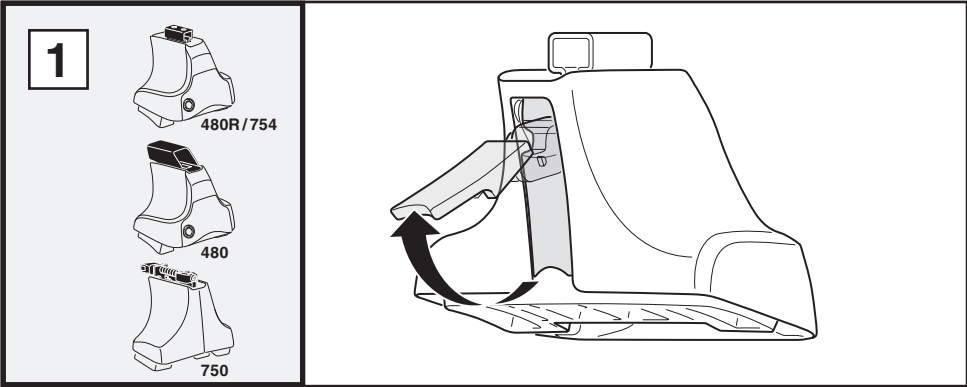
x2 x2 x2 x4	x2	x2 x2 x4 x4	x2 x2	x2

326 x4

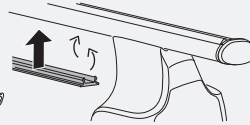
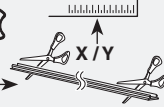
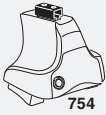
317 x4

RR **FR**
FL **RL** x1

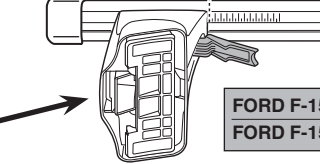
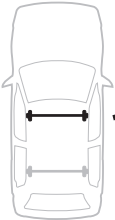
Kit



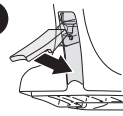
3



1

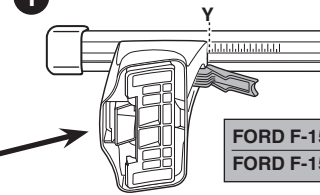


2

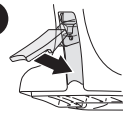


	X
FORD F-150, 4-dr Super Cab, 09–	57,5
FORD F-150, 4-dr Super Crew Cab, 09–	57,5

1



2



	Y
FORD F-150, 4-dr Super Cab, 09–	57,5
FORD F-150, 4-dr Super Crew Cab, 09–	57,5

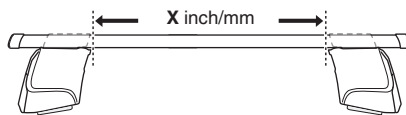


480R

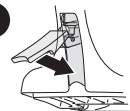


480

1

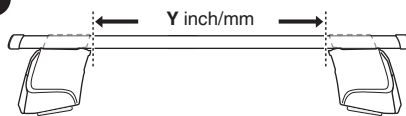


2



	X inch	X mm
FORD F-150, 4-dr Super Cab, 09–	48 1/4"	1226 mm
FORD F-150, 4-dr Super Crew Cab, 09–	48 1/4"	1226 mm

1



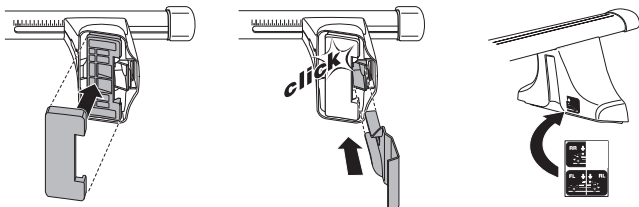
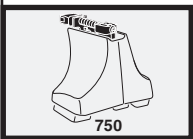
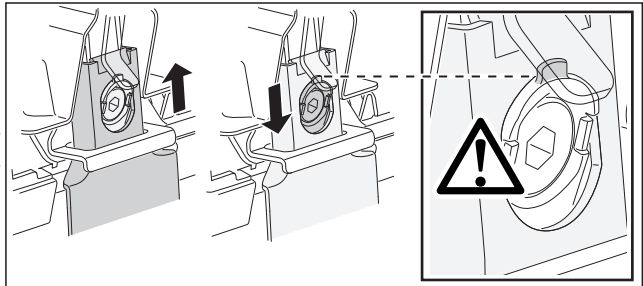
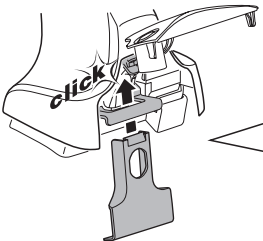
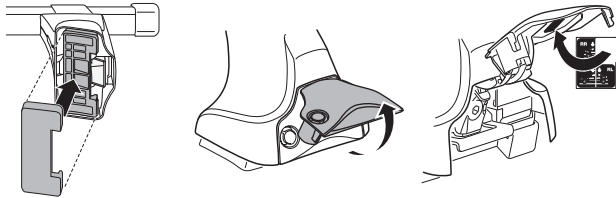
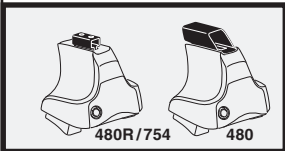
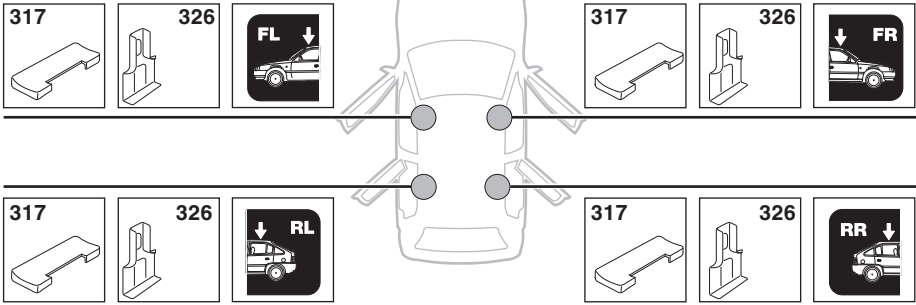
2



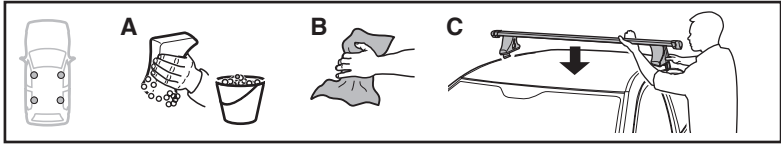
	Y inch	Y mm
FORD F-150, 4-dr Super Cab, 09–	48 1/4"	1226 mm
FORD F-150, 4-dr Super Crew Cab, 09–	48 1/4"	1226 mm

4

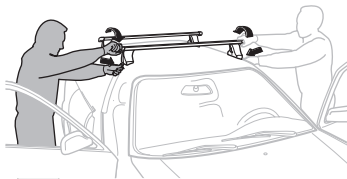
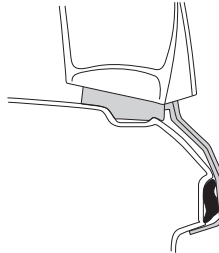
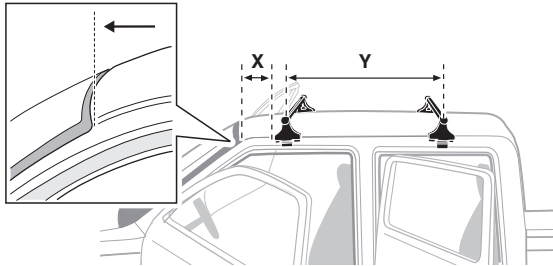
FORD F-150, 4-dr Super Cab, 09–
FORD F-150, 4-dr Super Crew Cab, 09–



5



	X mm	Y mm	X inch	Y inch
FORD F-150, 4-dr Super Cab, 09-	256 mm	760 mm	10 1/8"	29 7/8"
FORD F-150, 4-dr Super Crew Cab, 09-	256 mm	760 mm	10 1/8"	29 7/8"



GB/US Tighten alternately

D Die Schrauben abwechselnd anziehen

F Serrer alternativement chaque côté

NL Afwisselend aan de linker- en de rechterkant aandraaien

I Alternare il serraggio delle viti

E Apretar alternativamente

PT Aperte alternadamente

S Dra åt växelvis

FIN Kierrä vuorotellen

EST Pinguldage vaheldumisi

LAT Pielieciet pamišus

LIT Užsukinėkite pakaitomis

PL Śruby dokręcaj naprzemiennie

RU Затягивайте попеременно

CZ Pokręťta bagażníka dokręcaj dokręcaj naprzemiennie.

SK Doťahujte striedavo

SLO Privijajte izmenično.

HR Naizmjenično zategnite

HU Egymástól függetlenül szorítandó

GR Σφίγγετε εναλλάξ

TR Dönüşümlü sıkın

中文 交替拧紧

한국어 번갈아 가며 조이십시오.

日本語 交互に締め付けてください。

ไทย ชั้้นโน้แบบสลับ

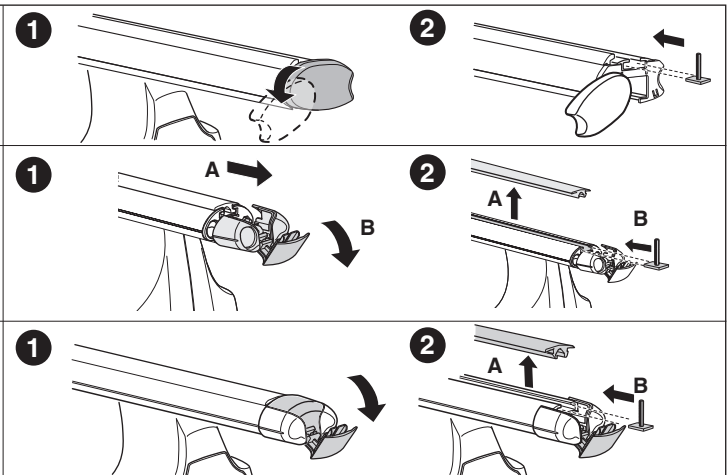
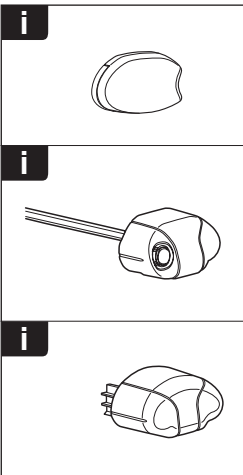
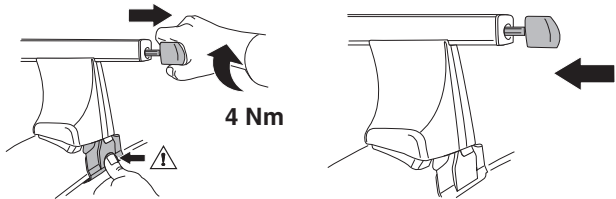
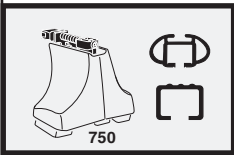
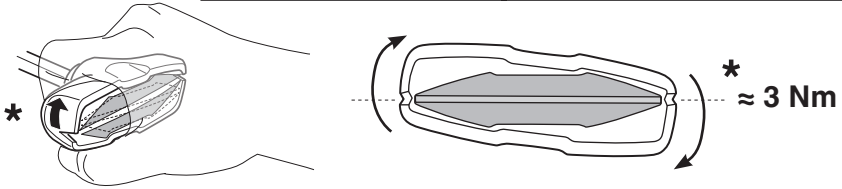
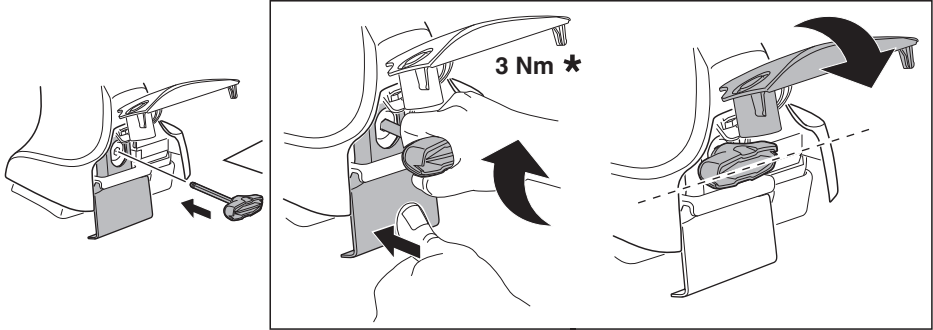
6

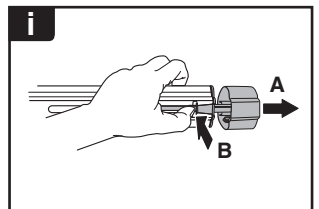
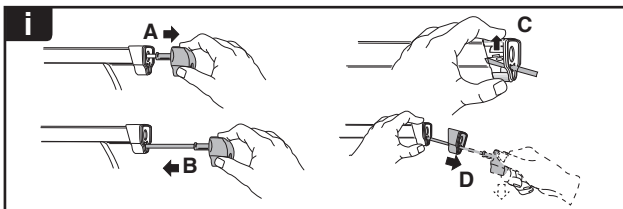
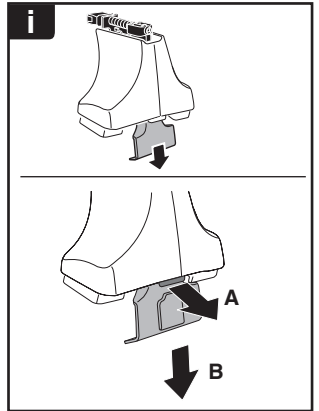
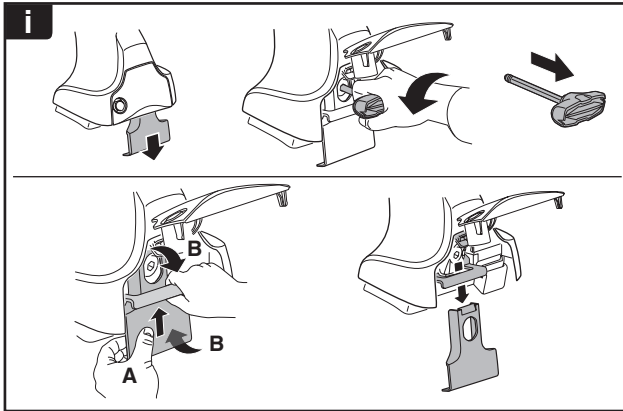
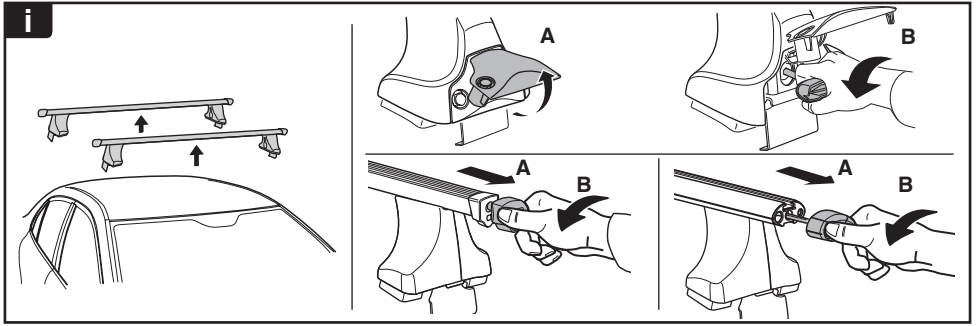


480R/754

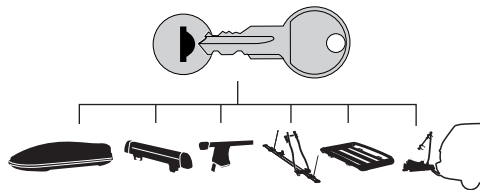


480

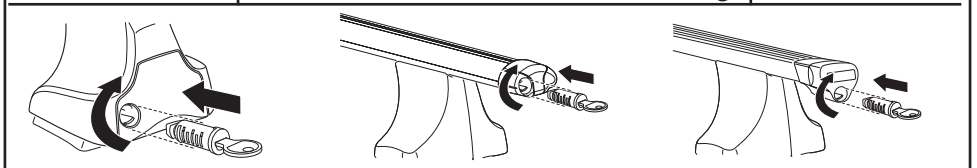




THULE
SWEDEN
**ONE
KEY
SYSTEM**



- 544 (x4)
- 596 (x6)
- 588 (x8)
- NA 510 (x10)
- EUR 452 (x12)
- ASIA



WW ▶ Thule Sweden AB, Box 69, 330 33 Hillerstorp, SWEDEN
NA ▶ Thule Inc., 42 Silvermine Road, Seymour, Connecticut 06483, USA

info@thule.com
customer.service@thule.com

www.thule.com