

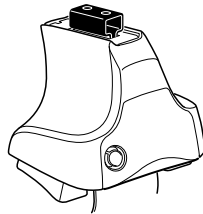
# Kit 1584

**HYUNDAI ix20**, 5-dr Hatchback, 10–

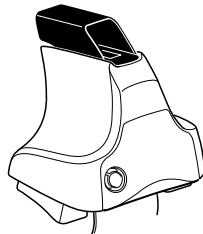
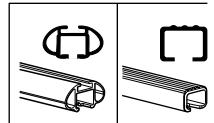
**HYUNDAI ix20**, 5-dr Hatchback, 10– (with glass roof)

**KIA Venga**, 5-dr Hatchback, 10–

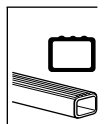
**KIA Venga**, 5-dr Hatchback, 10– (with glass roof)



**754** Rapid System  
**480R** Rapid Traverse (North America)



**480** Traverse (North America)



**754 Rapid System**  
**480R Rapid Traverse (North America)**

**480 Traverse (North America)**

**(North America)**

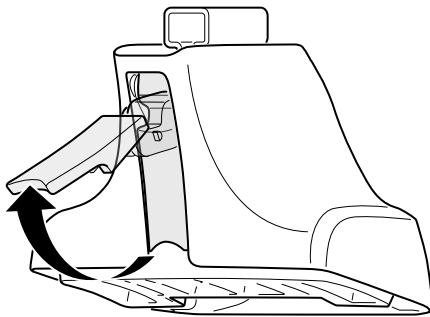
- Rods: 23 mm (x2), 17 mm (x1), 23 mm (x2), 23 mm (x2)
- Cap: 23 mm (x2)
- Screws: 4 (x4), 4 (x4)

- Bracket 1062 (x2)
- Bracket 1063 (x2)
- Plate 168 (x2)
- Plate 204 (x1)
- Plate 206 (x1)
- Directional pad (x1)



**Kit**

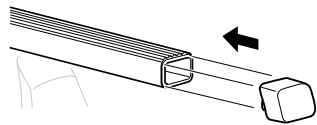
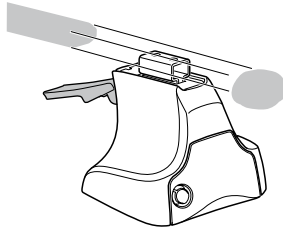
1



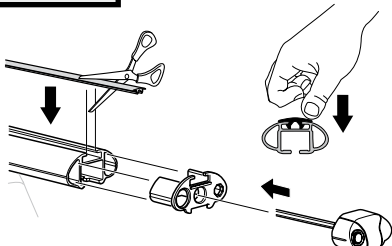
2



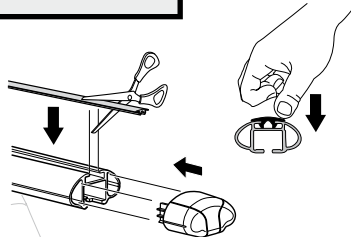
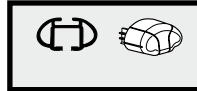
754 Rapid System  
480R Rapid Traverse  
(North America)



x4



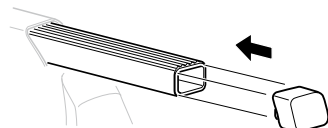
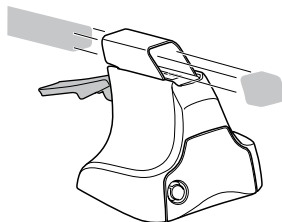
x4



x4

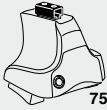


480 Traverse  
(North America)

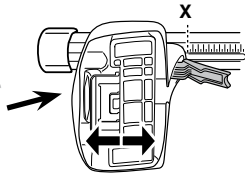


x4

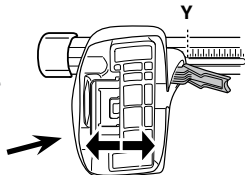
**3**



**754 Rapid System**



	<b>X</b>
<b>HYUNDAI ix20</b> , 5-dr Hatchback, 10-	<b>40,5</b>
<b>HYUNDAI ix20</b> , 5-dr Hatchback, 10- (with glass roof)	<b>40,5</b>
<b>KIA Venga</b> , 5-dr Hatchback, 10-	<b>40,5</b>
<b>KIA Venga</b> , 5-dr Hatchback, 10- (with glass roof)	<b>40,5</b>



	<b>Y</b>
<b>HYUNDAI ix20</b> , 5-dr Hatchback, 10-	<b>37,5</b>
<b>HYUNDAI ix20</b> , 5-dr Hatchback, 10- (with glass roof)	<b>37,5</b>
<b>KIA Venga</b> , 5-dr Hatchback, 10-	<b>37</b>
<b>KIA Venga</b> , 5-dr Hatchback, 10- (with glass roof)	<b>37,5</b>

**3**

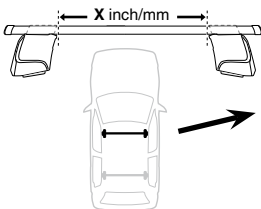


**480R Rapid Traverse**

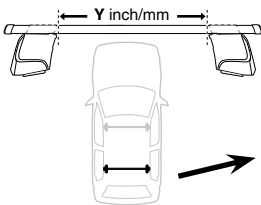


**480 Traverse**

**(North America)**

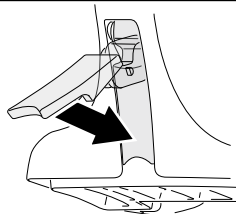


	<b>X inch</b>	<b>X mm</b>
<b>HYUNDAI ix20</b> , 5-dr Hatchback, 10-	<b>41 <sup>5</sup>/<sub>8</sub> "</b>	<b>1056 mm</b>
<b>HYUNDAI ix20</b> , 5-dr Hatchback, 10- (with glass roof)	<b>41 <sup>5</sup>/<sub>8</sub> "</b>	<b>1056 mm</b>
<b>KIA Venga</b> , 5-dr Hatchback, 10-	<b>41 <sup>5</sup>/<sub>8</sub> "</b>	<b>1056 mm</b>
<b>KIA Venga</b> , 5-dr Hatchback, 10- (with glass roof)	<b>41 <sup>5</sup>/<sub>8</sub> "</b>	<b>1056 mm</b>



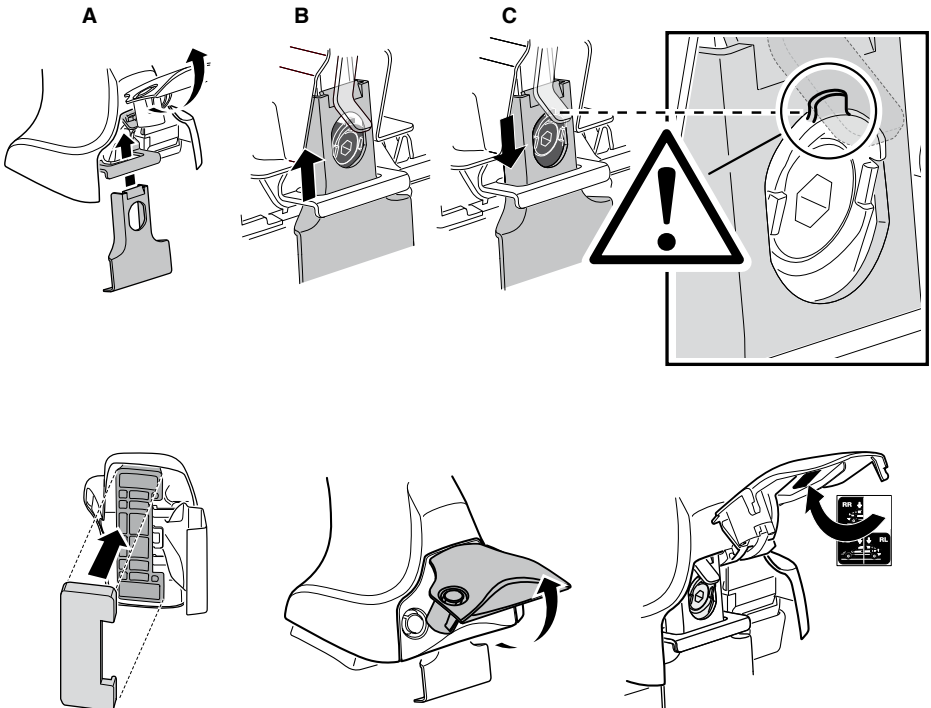
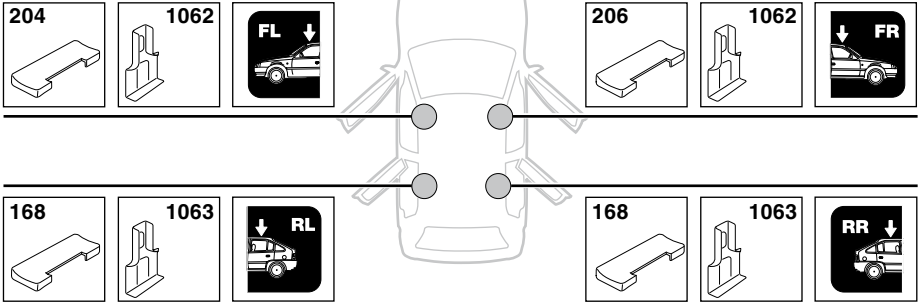
	<b>Y inch</b>	<b>Y mm</b>
<b>HYUNDAI ix20</b> , 5-dr Hatchback, 10-	<b>40 <sup>3</sup>/<sub>8</sub> "</b>	<b>1026 mm</b>
<b>HYUNDAI ix20</b> , 5-dr Hatchback, 10- (with glass roof)	<b>40 <sup>3</sup>/<sub>8</sub> "</b>	<b>1026 mm</b>
<b>KIA Venga</b> , 5-dr Hatchback, 10-	<b>40 "</b>	<b>1021 mm</b>
<b>KIA Venga</b> , 5-dr Hatchback, 10- (with glass roof)	<b>40 <sup>3</sup>/<sub>8</sub> "</b>	<b>1026 mm</b>

**4**

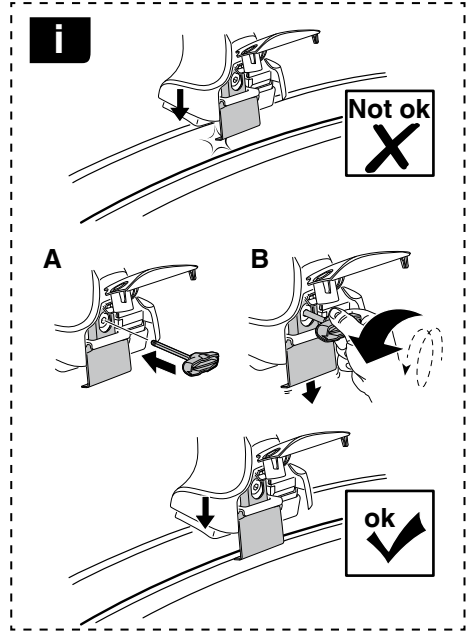
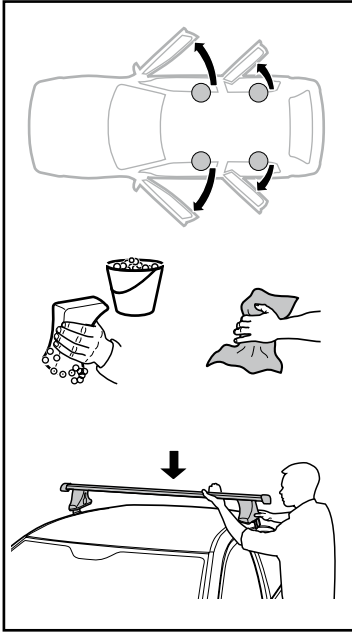


**5**

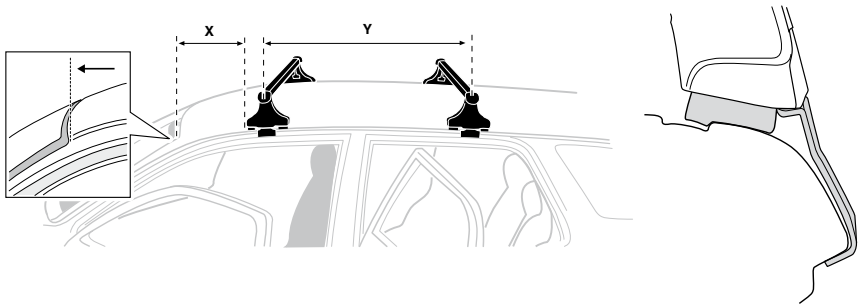
**HYUNDAI ix20**, 5-dr Hatchback, 10-  
**HYUNDAI ix20**, 5-dr Hatchback, 10- (with glass roof)  
**KIA Venga**, 5-dr Hatchback, 10-  
**KIA Venga**, 5-dr Hatchback, 10- (with glass roof)



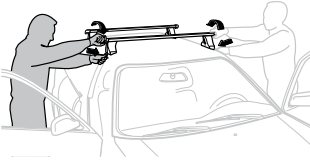
6



	X mm	Y mm	X inch	Y inch
HYUNDAI ix20, 5-dr Hatchback, 10-	270 mm	700 mm	10 <sup>5</sup> / <sub>8</sub> "	27 <sup>1</sup> / <sub>2</sub> "
HYUNDAI ix20, 5-dr Hatchback, 10- (with glass roof)	175 mm	620 mm	6 <sup>7</sup> / <sub>8</sub> "	24 <sup>3</sup> / <sub>8</sub> "
KIA Venga, 5-dr Hatchback, 10-	270 mm	635 mm	10 <sup>5</sup> / <sub>8</sub> "	24 <sup>7</sup> / <sub>8</sub> "
KIA Venga, 5-dr Hatchback, 10- (with glass roof)	175 mm	620 mm	6 <sup>7</sup> / <sub>8</sub> "	24 <sup>3</sup> / <sub>8</sub> "



7



GB/US Tighten alternately  
 D Die Schrauben abwechselnd anziehen  
 F Serrer alternativement chaque côté  
 NL Afwisselend aan de linker- en de rechterkant aandraaien  
 I Alternare il serraggio delle viti  
 E Apertar alternativamente  
 PT Aperte alternadamente  
 S Dra åt växelvis  
 FIN Kierrä vuorotellen  
 EST Pinguldage vaheldumisi  
 LAT Pievelciēt pamišus  
 LIT Užsukinėkite pakaitomis  
 PL Śruby dokręcaj naprzemiennie  
 RU Затягивайте попеременно

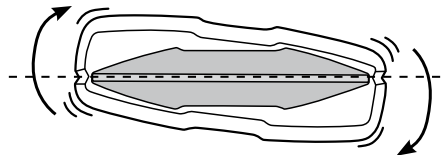
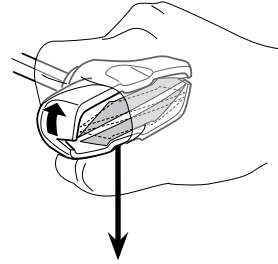
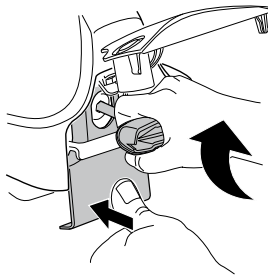
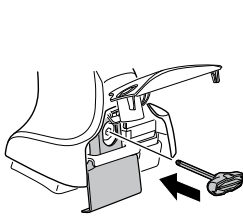
CZ Pokręťta bagażnika dokręcaj dokręcaj naprzemiennie.  
 SK Doťahujte striedavo  
 SLO Privijajte izmenično.  
 HR Naizmenično zategnite  
 HU Egymástól függetlenül szorítandó  
 GR Σφιγγεται εναλλάξ  
 TR Dönüşümlü sıkın

中文 交替拧紧

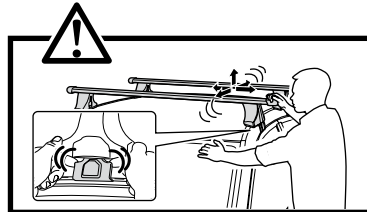
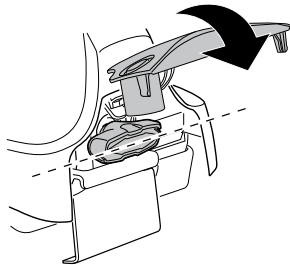
한국어 번갈아 가며 조이십시오.

日本語 交互に締め付けてください。

ไทย ชั้้นในแบบสลับ



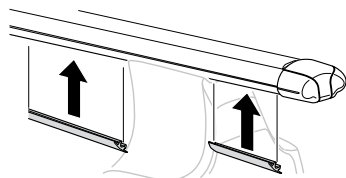
≈ 3 Nm

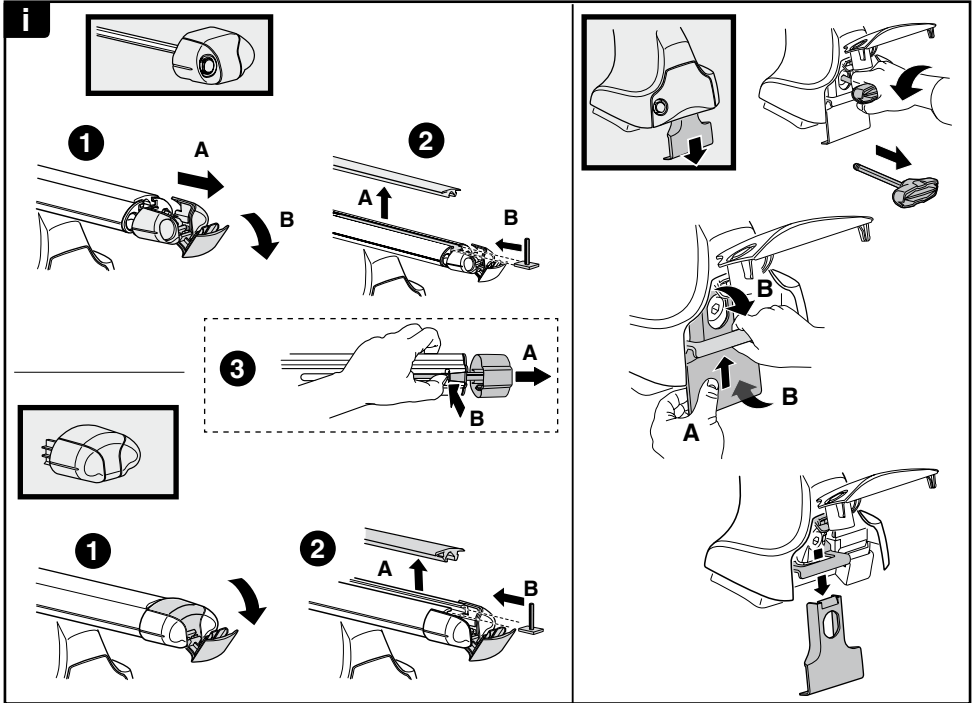
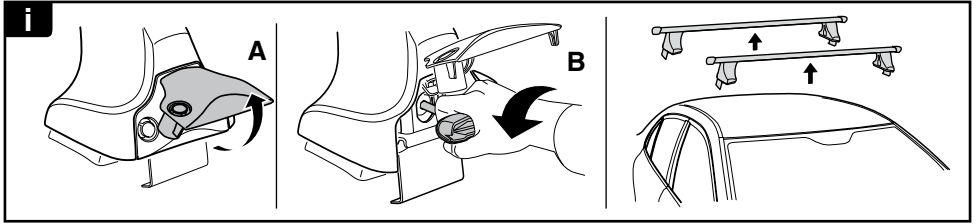


8

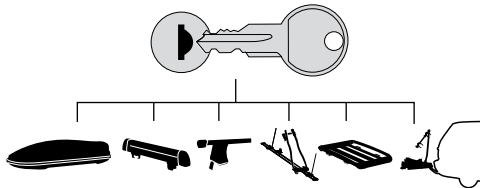


x1  
17 mm





**THULE**  
SWEDEN  
**ONE  
KEY  
SYSTEM**



- 544** (x4)
- 596** (x6)
- 588** (x8)
- NA **510** (x10)
- EUR **452** (x12)
- ASIA

