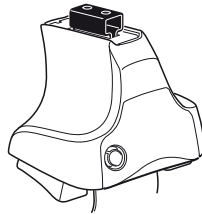


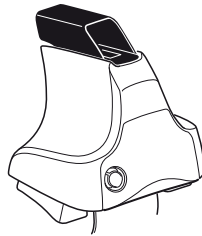
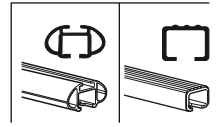
# Kit 1632

**PORSCHE Cayenne**, 5-dr SUV, 10- / \*11- (Without railing)

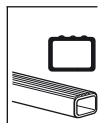
\*North America



**754** Rapid System  
**480R** Rapid Traverse (North America)

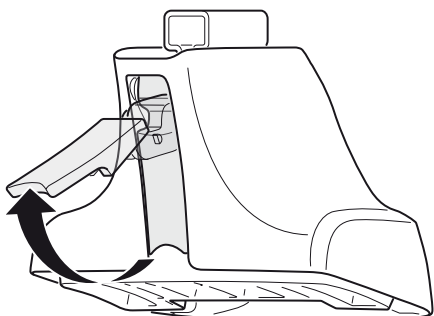


**480** Traverse (North America)





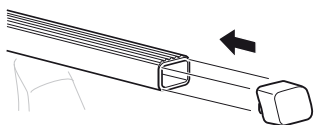
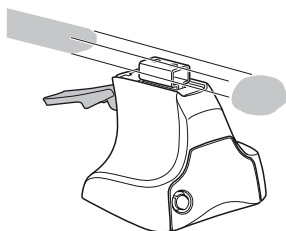
1



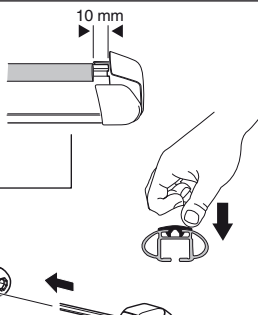
2



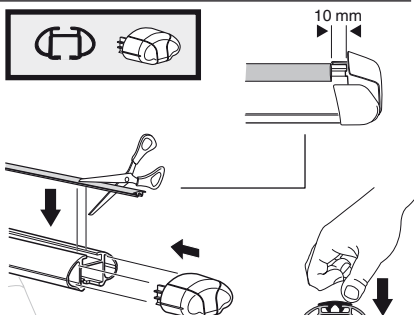
754 Rapid System  
480R Rapid Traverse  
(North America)



x4



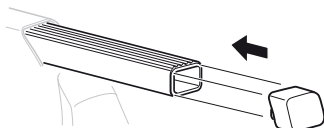
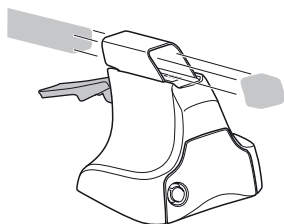
x4



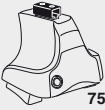
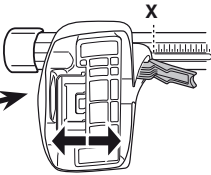
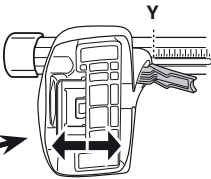
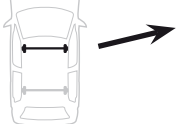
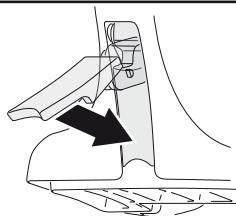
x4



480 Traverse  
(North America)

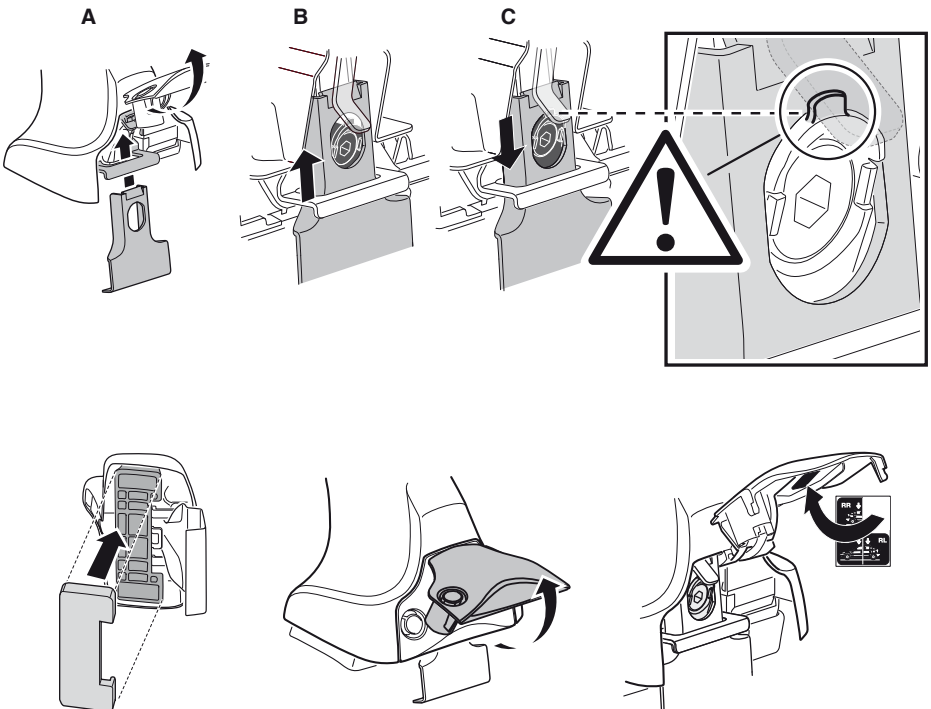
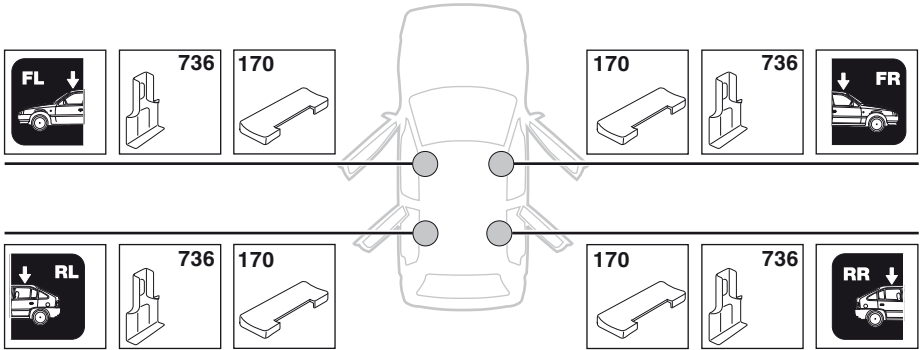


x4

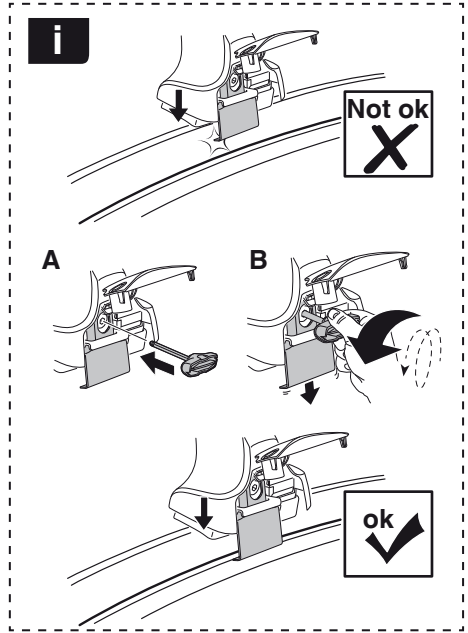
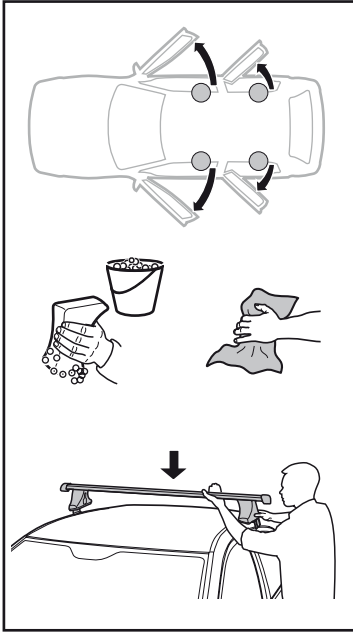
**3****754** Rapid System
**PORSCHE Cayenne, 5-dr SUV, 10- / \*11- (Without railing)**
**X****51**
**PORSCHE Cayenne, 5-dr SUV, 10- / \*11- (Without railing)**
**Y****45****3****480R** Rapid Traverse**480** Traverse**(North America)****X inch/mm**
**PORSCHE Cayenne, 5-dr SUV, 10- / \*11- (Without railing)**
**X inch****45 3/4"****X mm****1161 mm****Y inch/mm**
**PORSCHE Cayenne, 5-dr SUV, 10- / \*11- (Without railing)**
**Y inch****43 3/8"****Y mm****1101 mm****4**

# 5

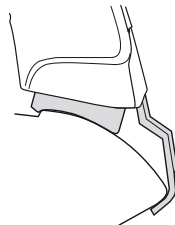
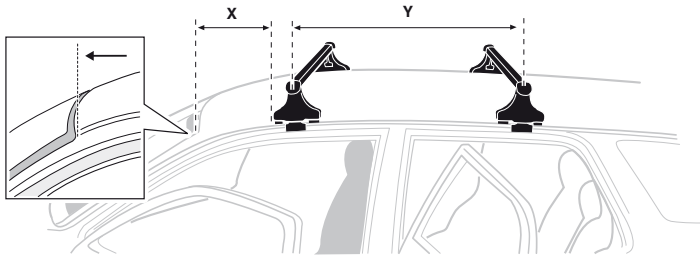
PORSCHE Cayenne, 5-dr SUV, 10- / \*11- (Without railing)



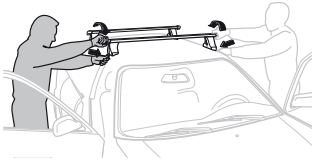
6



	X mm	Y mm	X inch	Y inch
PORSCHE Cayenne, 5-dr SUV, 10- / *11- (Without railing)	400 mm	700 mm	15 3/4"	27 1/2"



7



GB/US	Tighten alternately
D	Die Schrauben abwechselnd anziehen
F	Serrer alternativement chaque côté
NL	Afwisselend aan de linker- en de rechterkant aandraaien
I	Alternare il serraggio delle viti
E	Apretar alternativamente
PT	Aperte alternadamente
S	Dra åt växelvis
FIN	Kierrä vuorotellen
EST	Pinguldage vaheldumisi
LAT	Pielveiciet pamišus
LIT	Užsukinėkite pakaitomis
PL	Śruby dokręcaj naprzemiennie
RU	Загтягивайте попеременно

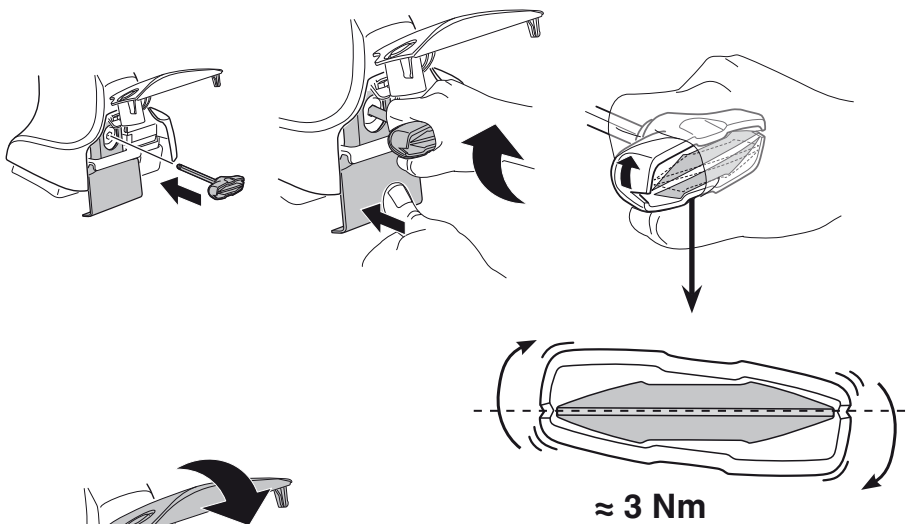
CZ	Pokręťta bagażnika dokręcaj naprzemiennie.
SK	Dofahajte striedavo
SLO	Privijajte izmenično.
HR	Naizmjenočno zategnite
HU	Egymástól függetlenül szorítandó
GR	Σφιγίγες εναλλάξ
TR	Dönüşümlü sıkın

中文 交替拧紧

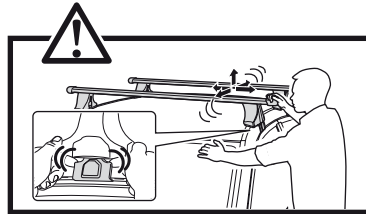
한국어 번갈아 가며 조이십시오.

日本語 交互に締め付けてください。

ไทย ชันในแบบสลับ



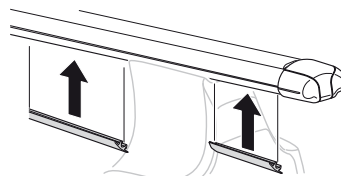
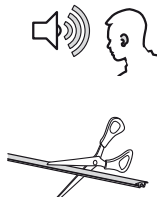
≈ 3 Nm

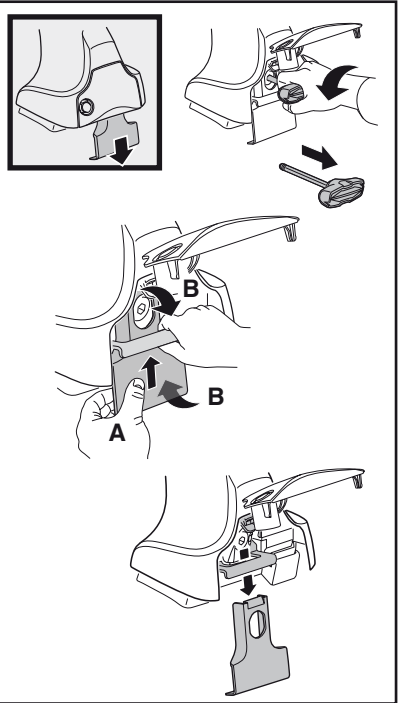
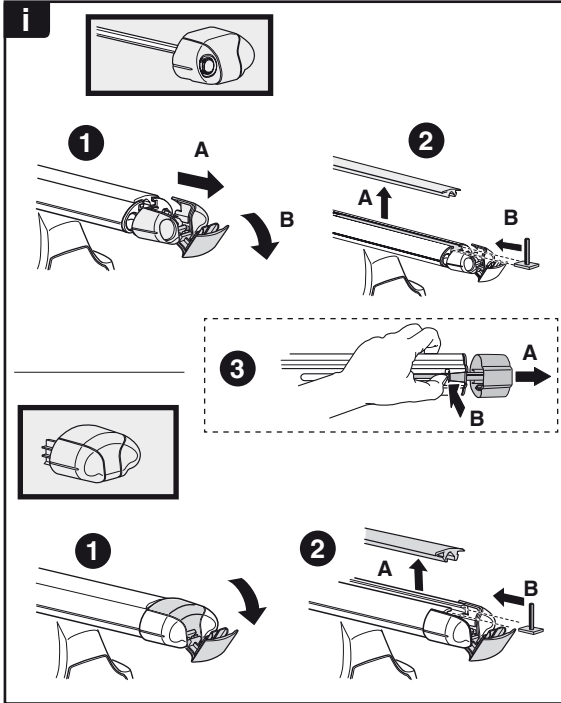
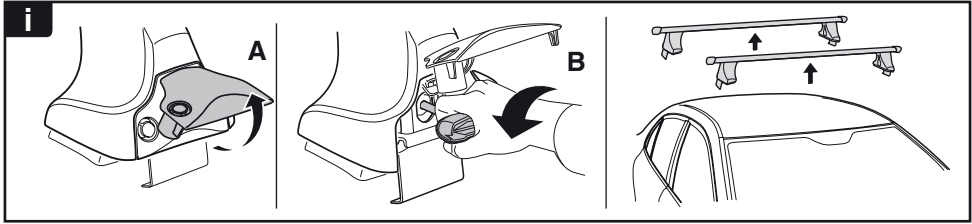


8

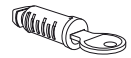
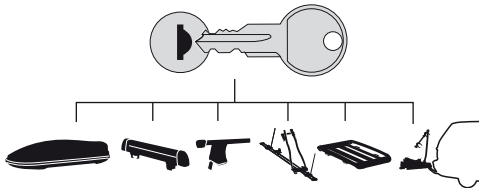


x1  
17 mm





**THULE**  
SWEDEN  
**ONE  
KEY  
SYSTEM**



**544** (x4)

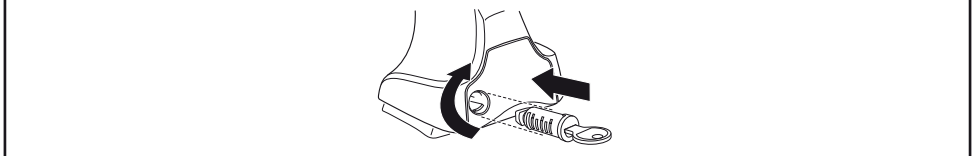
**596** (x6)

**588** (x8)

NA **510** (x10)

EUR **452** (x12)

ASIA



WW ▶ Thule Sweden AB, Box 69, 330 33 Hillerstorp, SWEDEN  
NA ▶ Thule Inc., 42 Silvermine Road, Seymour, Connecticut 06483, USA

info@thule.com  
customer.service@thule.com

www.thule.com