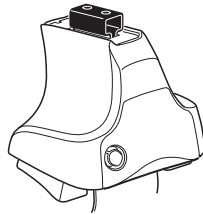


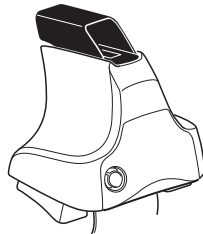
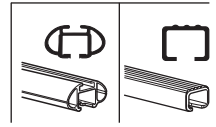
Kit 1658

DODGE Journey, 5-dr SUV, 12- / *13- (Without railing)
FIAT Freemont, 5-dr SUV, 12- (Without railing)

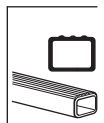
*North America



754 Rapid System
480R Rapid Traverse (North America)



480 Traverse (North America)



754 Rapid System
480R Rapid Traverse (North America)

754 Rapid System
480R Rapid Traverse (North America)
480 Traverse (North America)

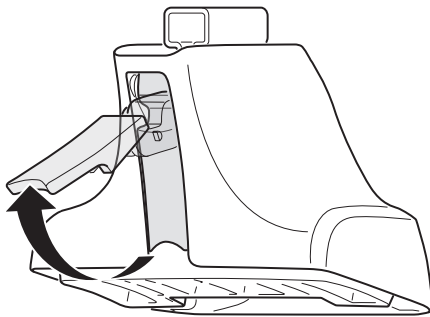
(North America)

1195 x 2
1196 x 2
239 x 4

RR ↓ ↓ FR
FL ↓ ↓ RL

x 1

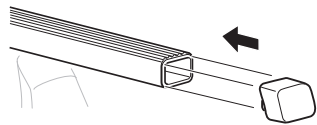
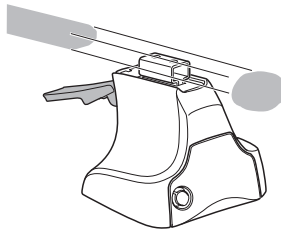
1



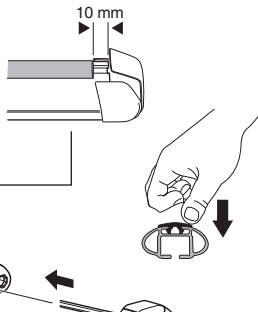
2



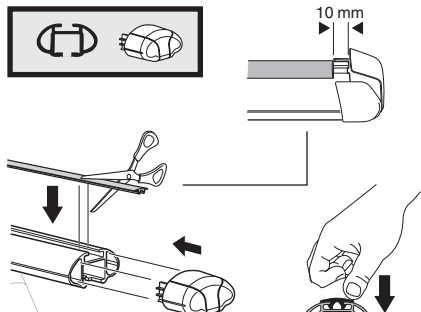
754 Rapid System
480R Rapid Traverse
(North America)



x4



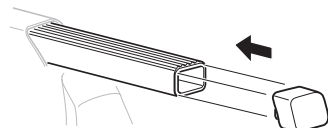
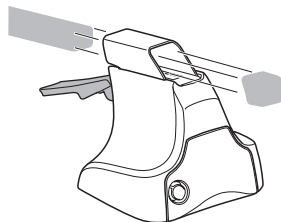
x4



x4

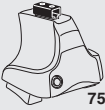


480 Traverse
(North America)

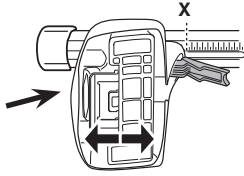


x4

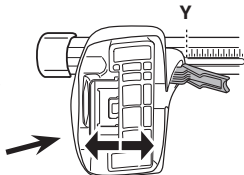
3



754 Rapid System



	X
DODGE Journey, 5-dr SUV, 12- / *13- (Without railing)	53
FIAT Freemont, 5-dr SUV, 12- (Without railing)	53



	Y
DODGE Journey, 5-dr SUV, 12- / *13- (Without railing)	49,5
FIAT Freemont, 5-dr SUV, 12- (Without railing)	49,5

3



480R Rapid Traverse



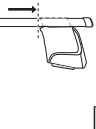
480 Traverse



(North America)

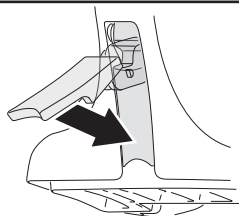


	X inch	X mm
DODGE Journey, 5-dr SUV, 12- / *13- (Without railing)	46 1/2"	1181 mm
FIAT Freemont, 5-dr SUV, 12- (Without railing)	46 1/2"	1181 mm



	Y inch	Y mm
DODGE Journey, 5-dr SUV, 12- / *13- (Without railing)	45 1/8"	1146 mm
FIAT Freemont, 5-dr SUV, 12- (Without railing)	45 1/8"	1146 mm

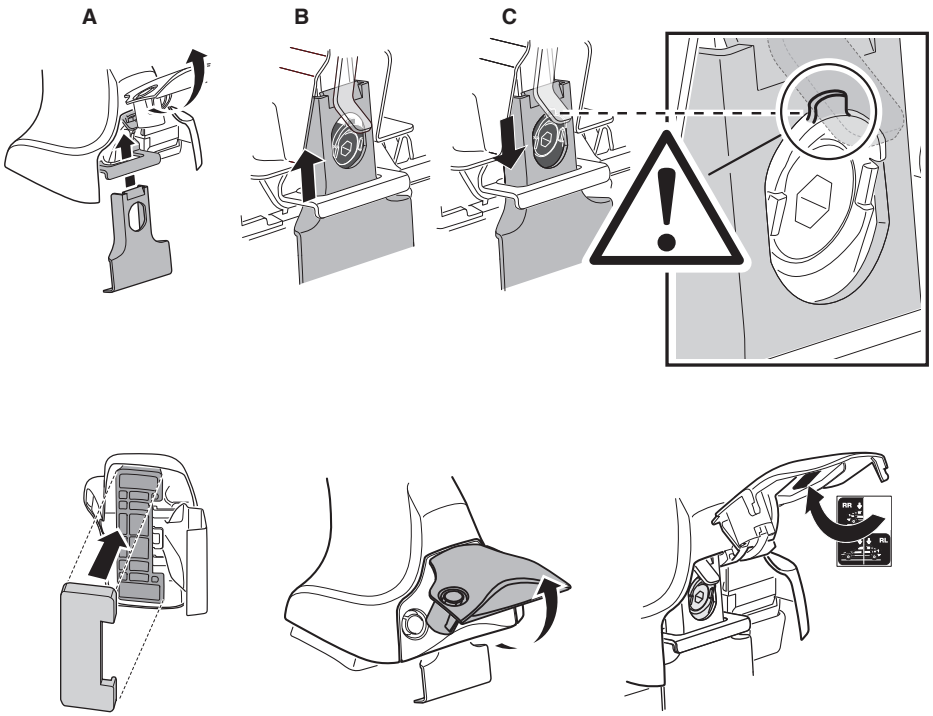
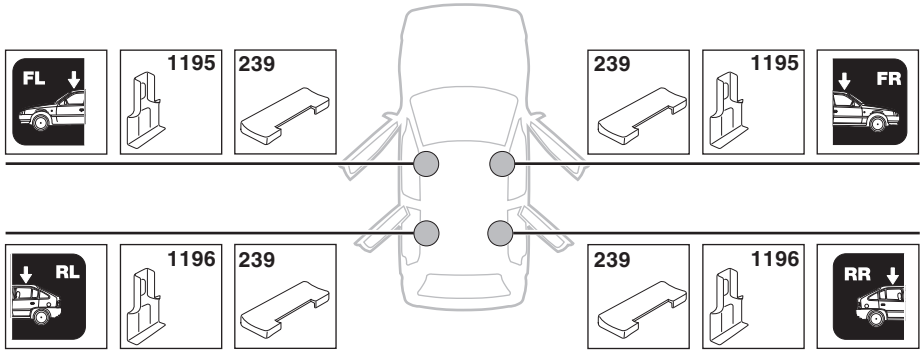
4



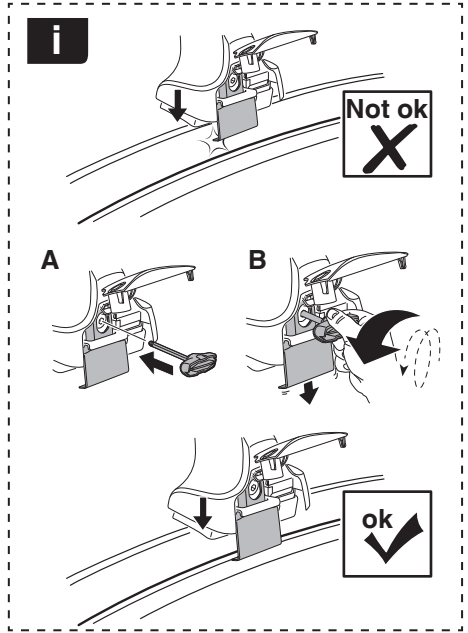
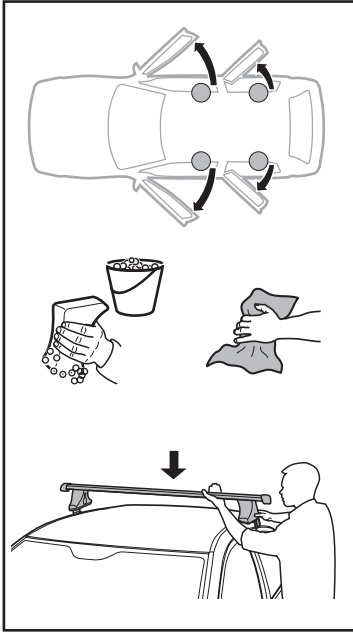
5

DODGE Journey, 5-dr SUV, 12- / *13- (Without railing)

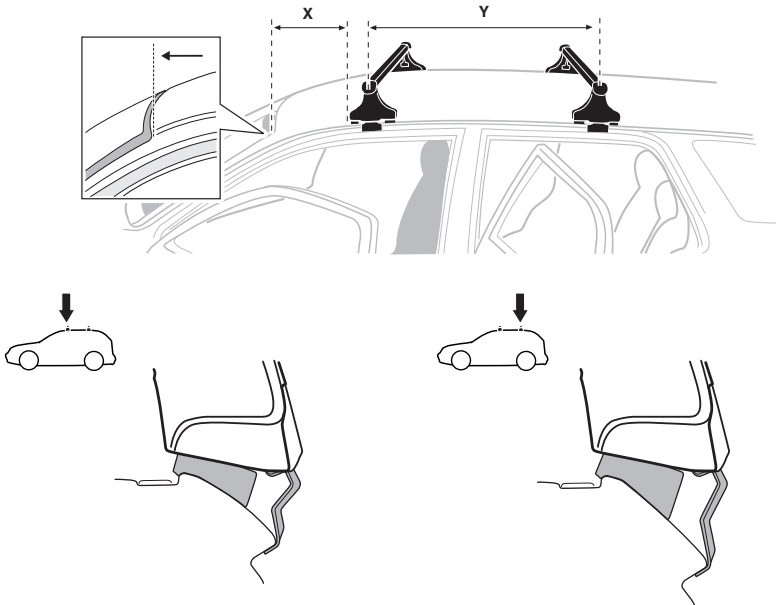
FIAT Freemont, 5-dr SUV, 12- (Without railing)



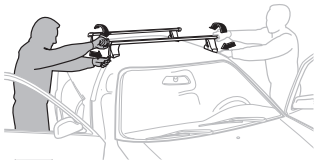
6



	X mm	Y mm	X inch	Y inch
DODGE Journey, 5-dr SUV, 12- / *13- (Without railing)	438 mm	711 mm	17 1/4"	28"
FIAT Freemont, 5-dr SUV, 12- (Without railing)	438 mm	711 mm	17 1/4"	28"



7

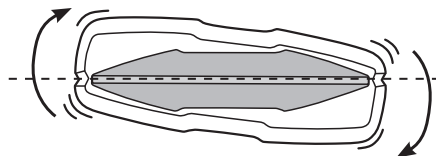
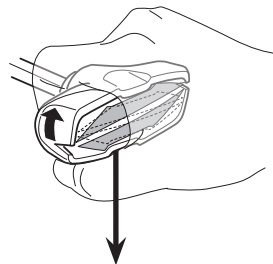
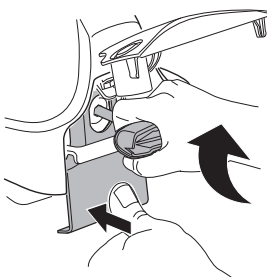
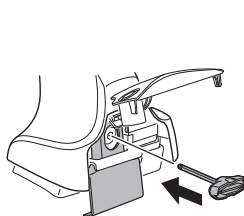


EN Tighten alternately
 DE Die Schrauben abwechselnd anziehen
 FR Serrer alternativement chaque côté
 NL Afwisselend aan de linker- en de rechterkant aandraaien
 IT Alternare il serraggio delle viti
 ES Apretar alternativamente
 PT Aperte alternadamente
 SV Dra åt växelvis
 DK Spænd skiftevis
 NE Trekk til vekselvis
 FI Kierrä vuorotellen
 ET Pinguldage vaheldumisi
 LV Pievelciēt pamišus
 LT Užsukinėkite pakaitomis
 PL Śruby dokręcaj naprzemiennie

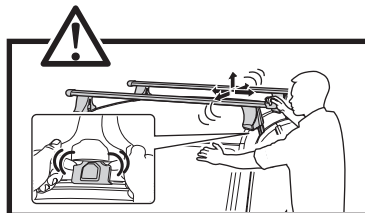
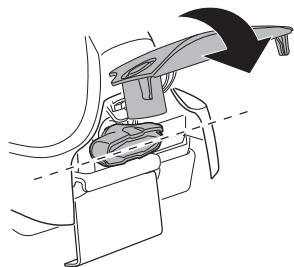
RU Затягивайте попеременно
 UK Затягти по чергово
 BG Затегнете последователно
 CS Pokręťta багаžníka dokręcaj dokręcaj naprzemiennie.
 SK Dofahujte striedavo
 SL Privijajte izmenično.
 HR/BIH Naizmjenično zategnite
 HU Egymástól függetlenül szorítandó
 EL Σφίγγετε εναλλάξ
 TR Dönüşümlü sıkın

إحكام الربط بالتناوب
 AR
 חזק לסיבוב
 HE

ZH 交替拧紧
 JA 自動固定
 KO 번갈아 조이기
 TH ซับในแบบสลับ



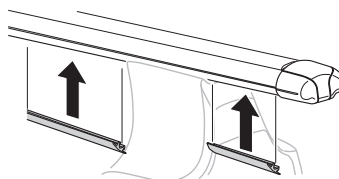
≈ 3 Nm

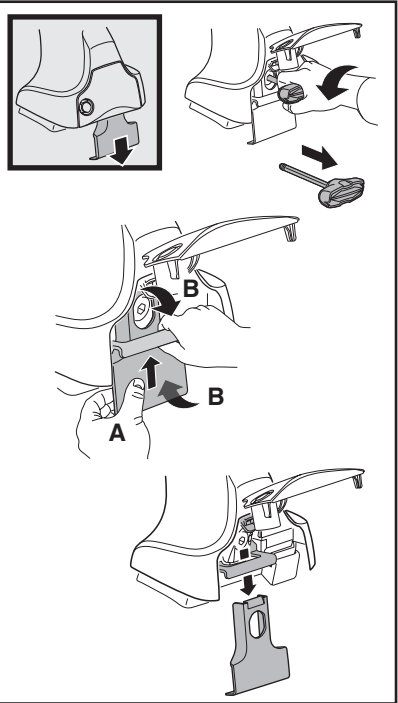
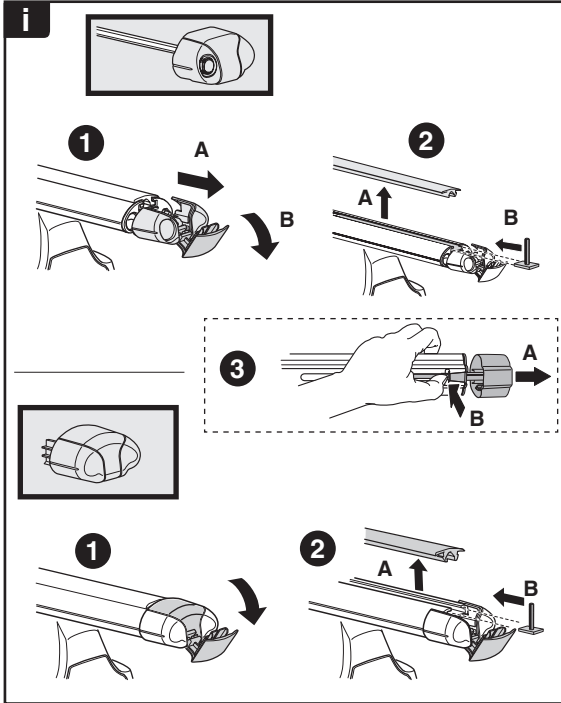
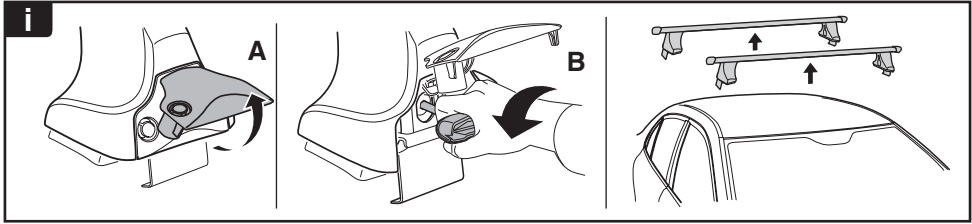


8

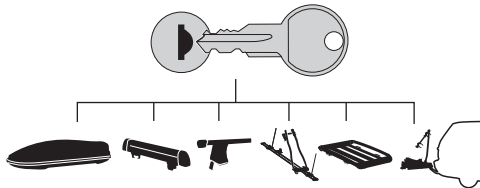


x1
17 mm





THULE
SWEDEN
**ONE
KEY
SYSTEM**



544 (x4)

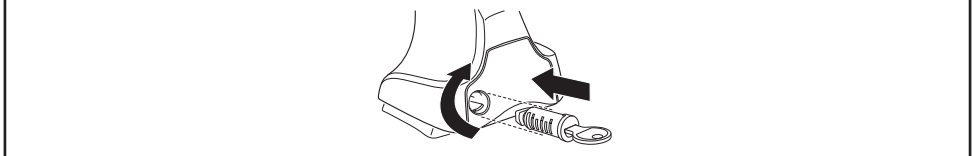
596 (x6)

588 (x8)

NA **510** (x10)

EUR **452** (x12)

ASIA



WW ▶ Thule Sweden AB, Box 69, 330 33 Hillerstorp, SWEDEN
NA ▶ Thule Inc., 42 Silvermine Road, Seymour, Connecticut 06483, USA

info@thule.com
customer.service@thule.com

www.thule.com

503-1658-01