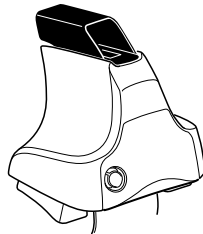
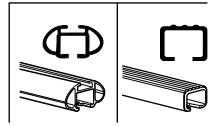


Kit 1659

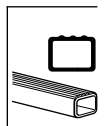
KIA Rio, 5-dr Hatchback, 11-



754 Rapid System
480R Rapid Traverse (North America)



480 Traverse (North America)



- x1
- x4
- x4
- x4

754 Rapid System
480R Rapid Traverse (North America)

- x1
- x4
- x4

480 Traverse (North America)

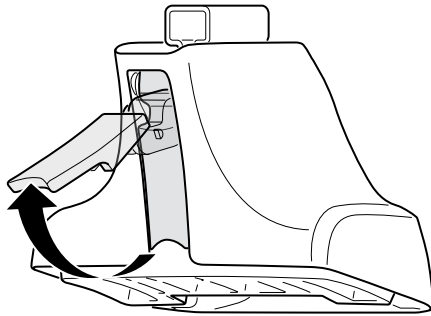
- x2
- x2
- x2
- x4
- x4
- x1
- x2
- x2
- x2
- x4

(North America)

- x2
- x2

- x2
- x2
- x2
- x1
- x1
- x1

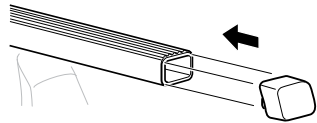
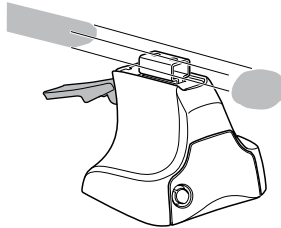
1



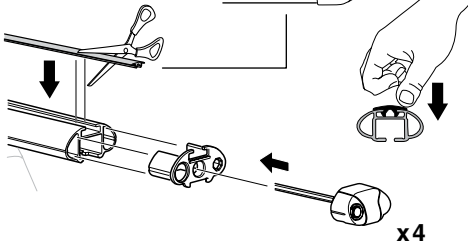
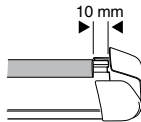
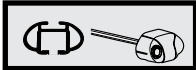
2



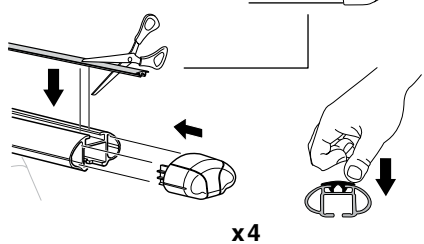
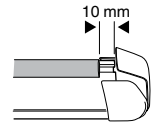
754 Rapid System
480R Rapid Traverse
(North America)



x4



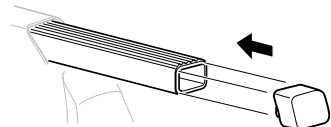
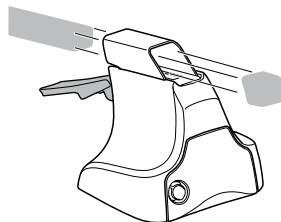
x4



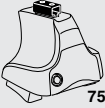
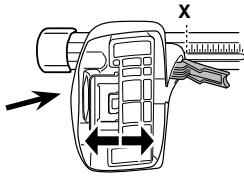
x4



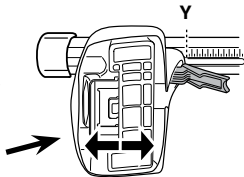
480 Traverse
(North America)



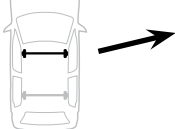
x4

3**754** Rapid System

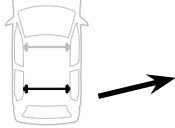
	X
KIA Rio, 5-dr Hatchback, 11-	37



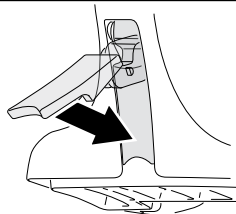
	Y
KIA Rio, 5-dr Hatchback, 11-	26,5

3**480R** Rapid Traverse**480** Traverse**(North America)**

	X inch	X mm
KIA Rio, 5-dr Hatchback, 11-	40 1/4"	1021 mm

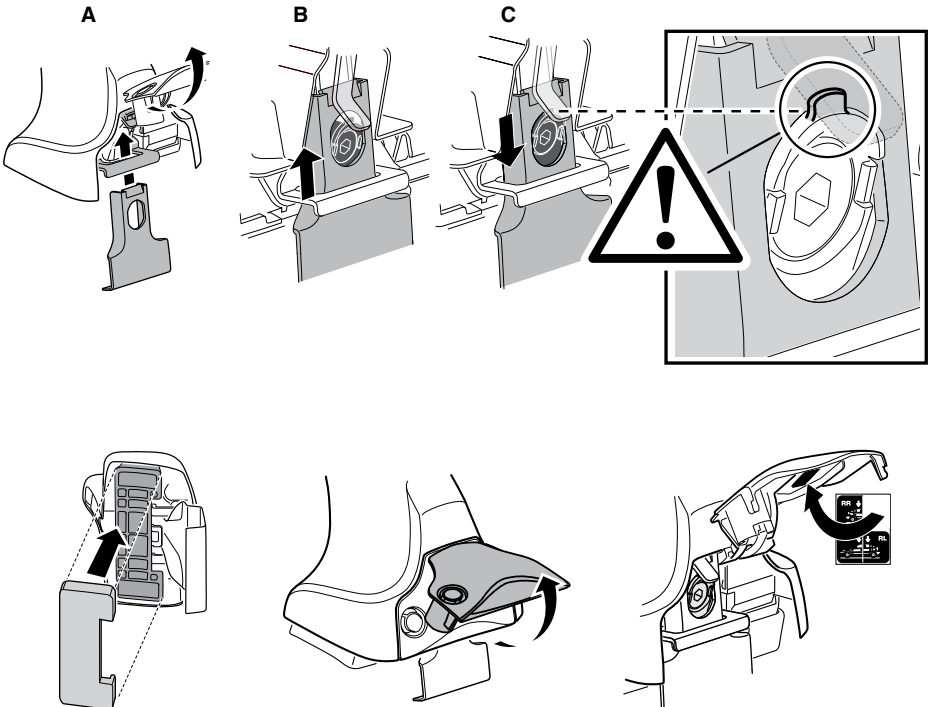
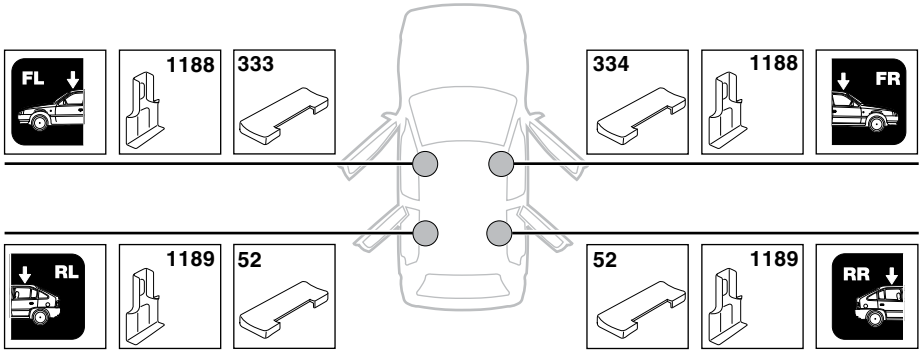


	Y inch	Y mm
KIA Rio, 5-dr Hatchback, 11-	36 1/8"	916 mm

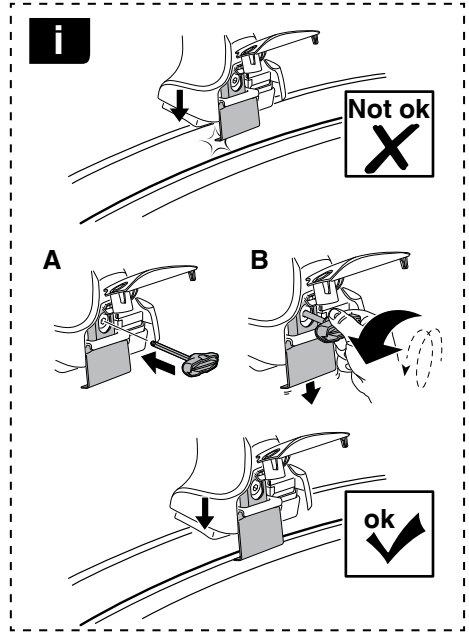
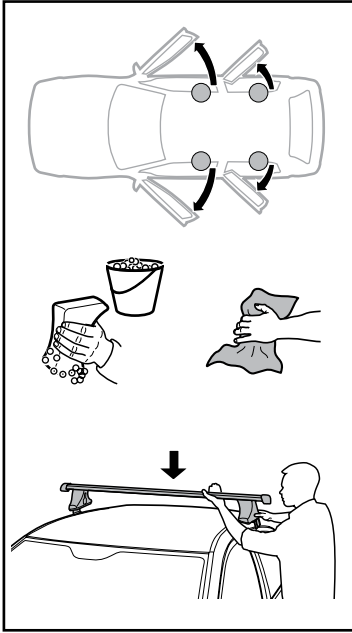
4

5

KIA Rio, 5-dr Hatchback, 11-

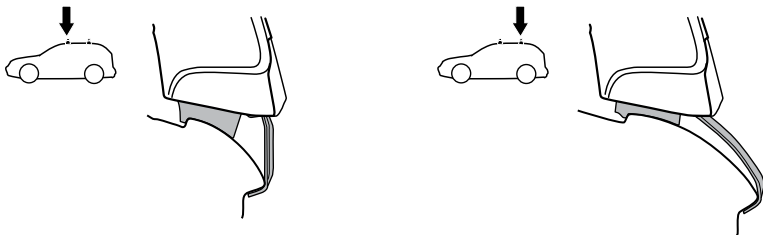
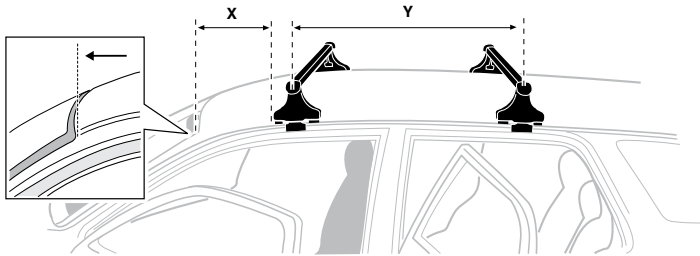


6



KIA Rio, 5-dr Hatchback, 11-

X mm	Y mm	X inch	Y inch
270 mm	670 mm	10 ⁵ / ₈ "	26 ³ / ₈ "



7



GB/US Tighten alternately
 D Die Schrauben abwechselnd anziehen
 F Serrer alternativement chaque côté
 NL Afwisselend aan de linker- en de rechterkant aandraaien
 I Alternare il serraggio delle viti
 E Apertar alternativamente
 PT Aperte alternadamente
 S Dra åt växelvis
 FIN Kierrä vuorotellen
 EST Pinguldage vaheldumisi
 LAT Pieļieciet pamīšus
 LIT Užsukinėkite pakaitomis
 PL Śruby dokręcaj naprzemiennie
 RU Затягивайте попеременно

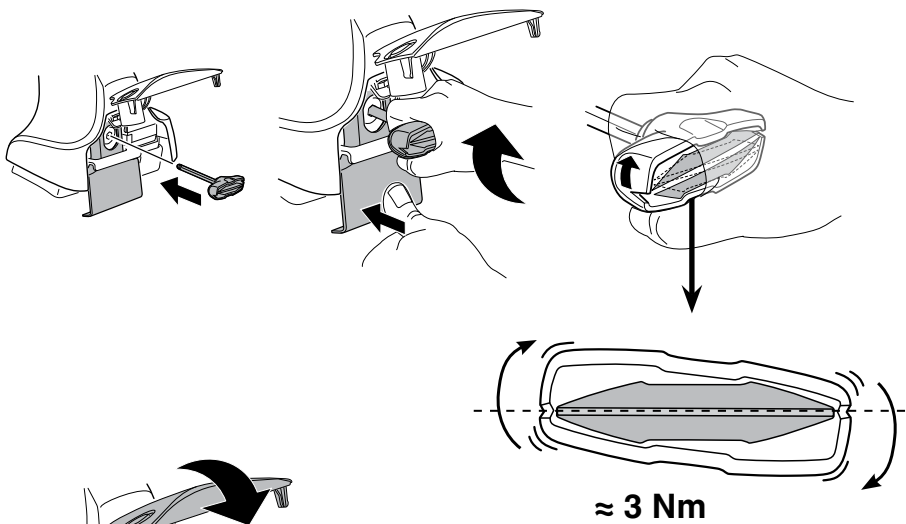
CZ Pokręťta bagażnika dokręcaj dokręcaj naprzemiennie.
 SK Dofahajte striedavo
 SLO Privijajte izmenično.
 HR Naizmjenočno zategnite
 HU Egymástól függetlenül szorítandó
 GR Σφιγίγτες εναλλάξ
 TR Dönüşümlü sıkın

中文 交替拧紧

한국어 번갈아 가며 조이십시오.

日本語 交互に締め付けてください。

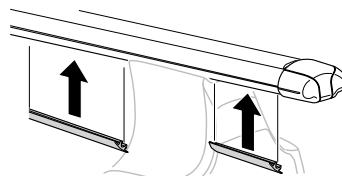
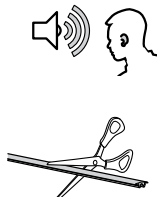
ไทย ชันในแบบสลับ

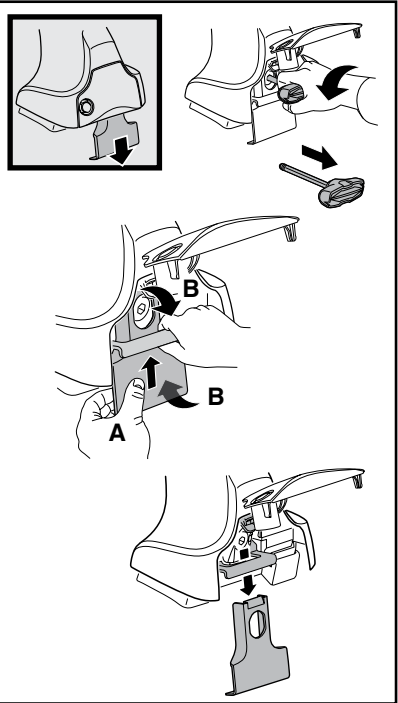
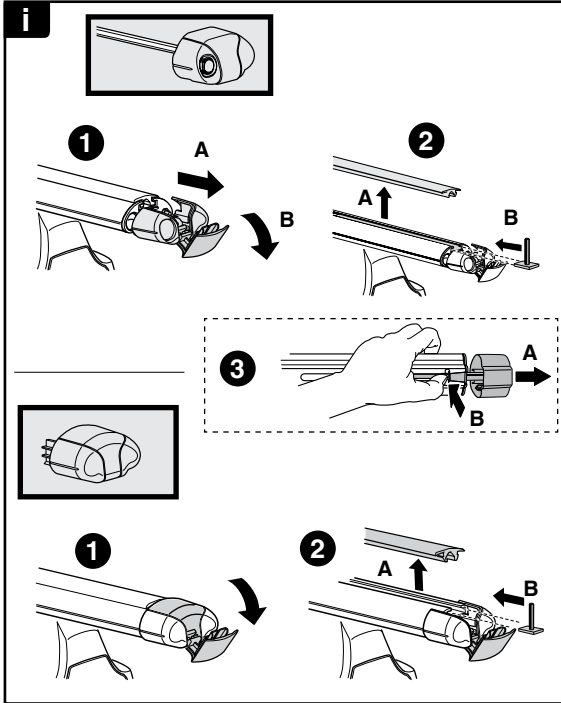
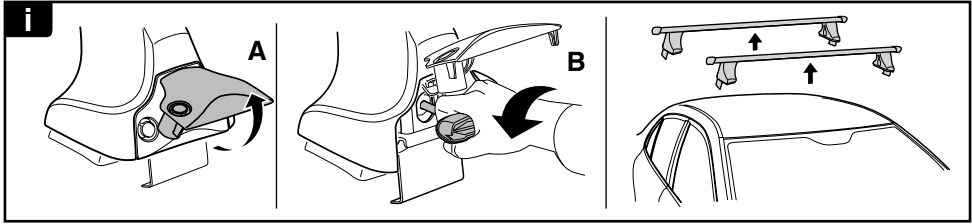


8

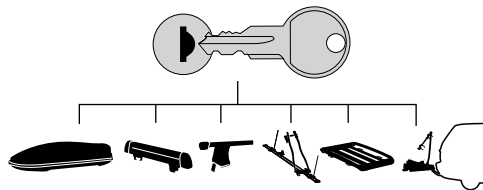


x1
17 mm





THULE
SWEDEN
**ONE
KEY
SYSTEM**



		(x4)
		(x6)
		(x8)
NA		(x10)
EUR		(x12)
ASIA		

